

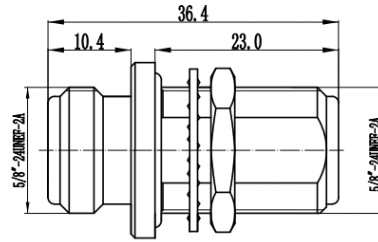
SRFS TELEINFRA

Get connected with us:

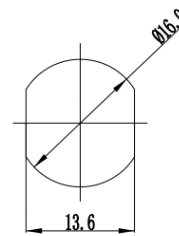


N female to N female bulkhead RF Adaptor

Model No.- SRFS-BH-NF-NF-18



Mounting Hole



Electrical Specifications	
Frequency range	DC-18GHz
Characteristic impedance	50Ω
VSWR	≤ 1.15:1
Type	Bulkhead, feedthrough
Connector Type	N (f) to N(f)
Durability (matings)	≥500
Mechanical & Environmental Specifications	
Operating Temperature	-45°C to +125°C
ROHS Compliant	Yes
Material & Finish	
Connector Body	Passivated stainless steel
Center Contact	Gold plated beryllium copper
Insulator	PEI

Add: plot no 10 shiv Vihar a block Najafgarh Sahibi river road Vikas Nagar Uttam Nagar new delhi-110059

+91 7838349349 info@srfsteleinfra.in, sales@srfsteleinfra.in, srfsteleinfra@gmail.com

www.srfsteleinfra.in, www.srfsteleinfra.com



SRFS Teleinfra | All specifications are subject to change. Unless otherwise stated, all specifications are nominal. SRFS reserves the right to make such changes as required. It may be necessary to make modifications to the part and/or the documentation of the part to implement improvements. See www.srfsteleinfra.in for the most current information. Revised: 19 Jan 2023