

SRFS Teleinfra

Cluster Connector

Catalogue

Cluster connector MQ4/MQ5

Contents

Cluster Connector MQ4

MQ4-PLUG for ¼" Super Flex

MQ4-JACK for 141 Cable

Cluster Connector MQ5

MQ5-PLUG-1/4" Super Flex

MQ5-JACK-141 Cable

MQ4/MQ5 Testing Adaptors

Cluster connector MQ4/MQ5

A new integrated rf connector

Easy to install

Save installation time

Reduce the space required on the antenna end plates

To meet the needs of an ever-increasing mobile antenna communication application, MQ4/ MQ5 is new compact RF cluster connector which is easy to install .

This connector is integrated into small size to meet the miniaturization requirements of mobile wireless network components and antenna multi-way in and out (MIMO).

Characteristics

(1) Lateral Wall Contact Structure: Because of the interface can accommodate large deviations when multiple ports are connected at the same time, that led to the signal of a certain port can-not be transmitted normally. Now an elastic sidewall contact is added to the socket body of each port on MQ4/MQ5 . This contact part is connected to the socket body and one end extends to the socket outside end face. When the socket is connected to the plug, the elastic parts can ensure that there is no suspension from the socket and plug end face to reduce the connecting and improve the electrical performance effectively. At the same time, the lateral wall contact can keep the stable PIM value when the connector is tightened in different degrees.

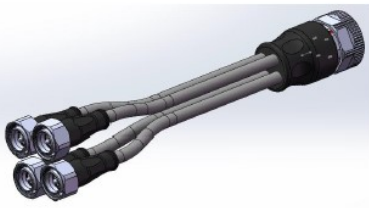
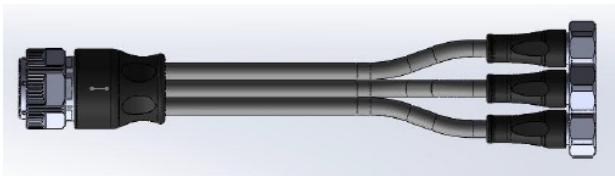
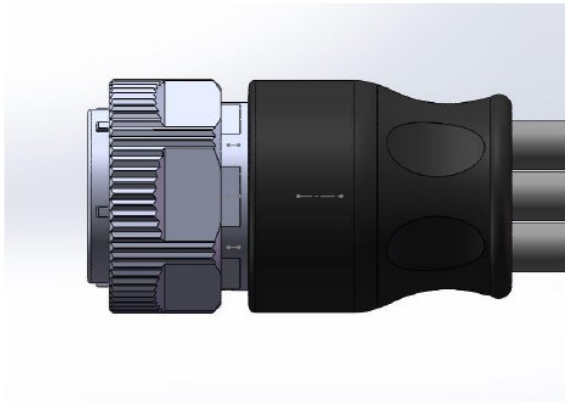
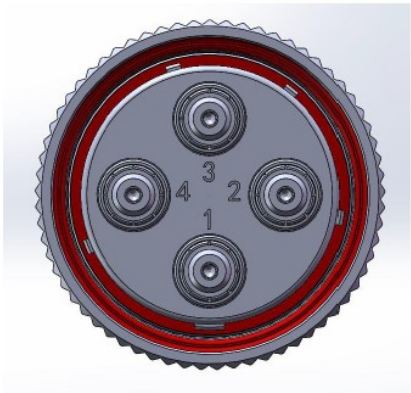
(2) Asymmetric connection (Prevent mistaken insertion): Because multiple end faces are connected at the same time, if different types of product connections will cause product damage, there are antiterror pins on the surface of different types of connectors to ensure no misassembly of 4-core products and 5-core products. In addition, in order to distinguish the products of different manufacturers, ensure coaxially and facilitate fault detection during the connection of MQ4(MQ5), asymmetrical angles and different widths are adopted to locate slots so as to achieve accurate positioning and errorproof, prevent mistaken insertion effects.

(3) The jack type MQ4(MQ5) should be matched with semi flexible 141 cable. The plug type should be matched with super flexible 1/4" cable combination the other end can be with N, 4.3 /10, 7/16 or customers' requirements. Installation flange size is based on 35mm*35mm.

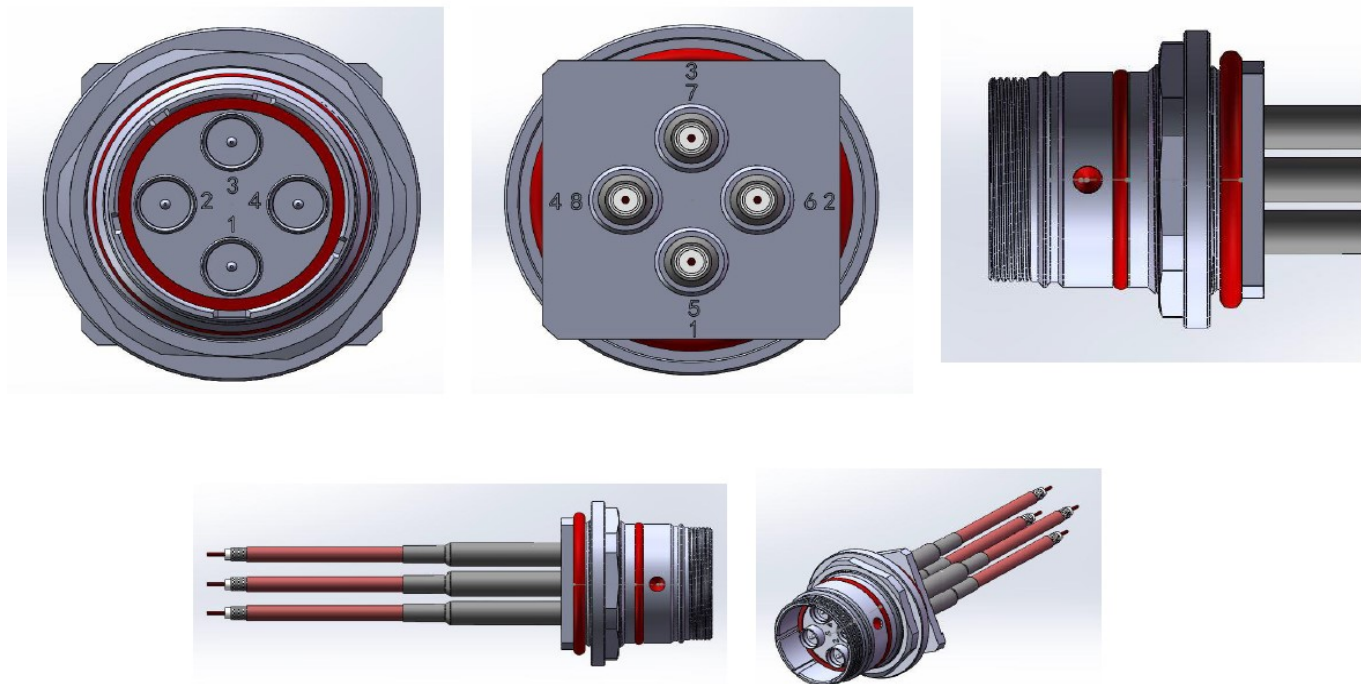
Cluster connector MQ4

Electrical Specification				
Frequency Range		DC-6GHz		
Impedance		50Ω		
Frequency		DC-2.7GHz	2.7-4.2GHz	4.2-6GHz
VSWR	Plug	≤1.12	≤1.15	≤1.30
	Jack	≤1.10	≤1.15	≤1.30
Insertion loss		≤0.05vfdB		
Insulation Resistance		≥5000MΩ		
Dielectric Withstanding Voltage		≥1000V AC		
Isolation		≥90dB		
Environmental Specification				
Operating& Storage Temperature Range		-55℃ to +125℃		
Environmental Compliance		RoHS		
Water tightness		IP68(1m water depth/24hours)		
Salt-fog test		≥720h(Neutral salt spray)		
Material Specification				
Body		Brass	Ni-Sn Alloy	
Center Contact		BeCu	Silver	
Outer Contact		Brass	Silver	
Insulator		PTFE	-	
Nut		-	-	

Cluster connector MQ4 Plug



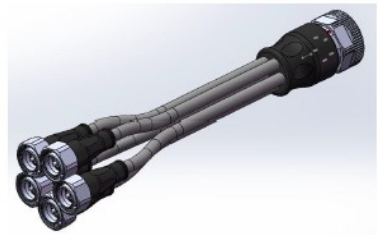
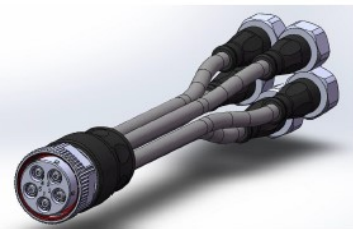
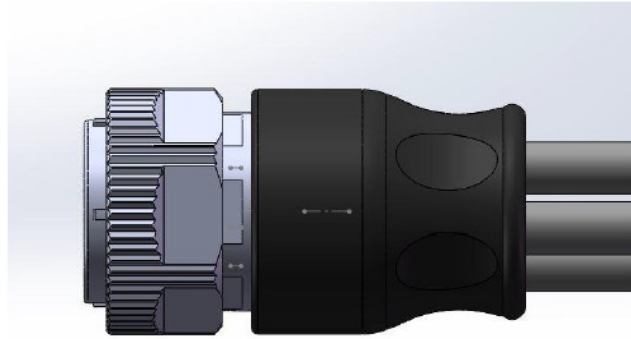
Cluster connector MQ4 Jack



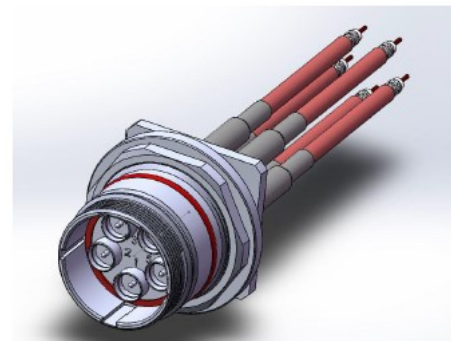
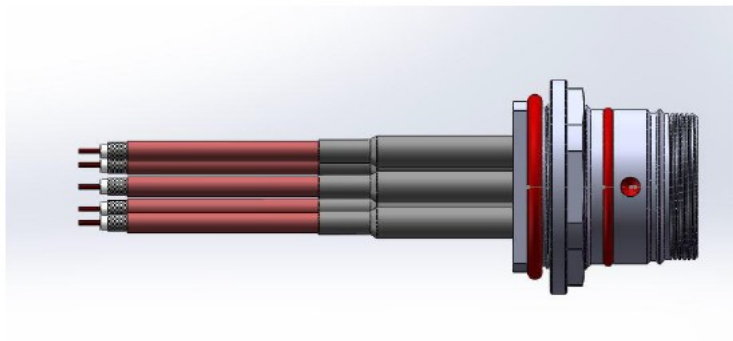
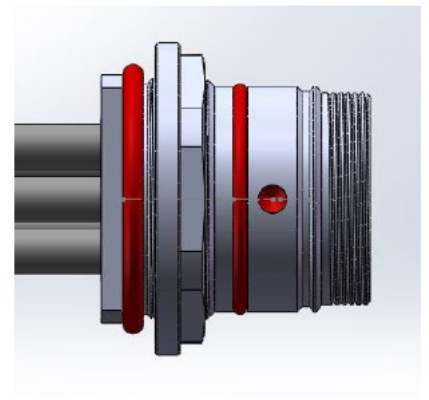
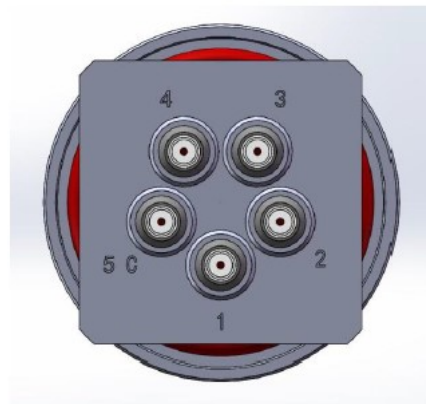
Cluster connector MQ5

Electrical Specification				
Frequency Range		DC-6GHz		
Impedance		50Ω		
Frequency		DC-2.7GHz	2.7-4.2GHz	4.2-6GHz
VSWR	Plug	≤1.12	≤1.15	≤1.30
	Jack	≤1.10	≤1.15	≤1.30
Insertion loss		≤0.05vfdB		
Insulation Resistance		≥5000MΩ		
Dielectric Withstanding Voltage		≥1000V AC		
Isolation		≥90dB		
Environmental Specification				
Operating& Storage Temperature Range		-55℃ to +125℃		
Environmental Compliance		RoHS		
Water tightness		IP68(1m water depth/24hours)		
Salt-fog test		≥720h(Neutral salt spray)		
Material Specification				
Body		Brass	Ni-Sn Alloy	
Center Contact		Beryllium Brass	Silver	
Outer Contact		Brass	Silver	
Insulator		PTFE	-	
Nut		-	-	

Cluster connector MQ5 Plug



Cluster connector MQ5 Jack



MQ4/MQ5 Testing Adaptors



MQ4 Jack to SMA Jack Adaptor



MQ4 Plug to SMA Jack Adaptor

MQ4/MQ5 Testing Adaptors



MQ5 Jack to SMA Jack Adaptor



MQ5 Plug to SMA Jack Adaptor

Plot no 10 Shiv Vihar A Block Najafgarh Nala Road Vikasnagar Uttam Nagar New Delhi-110059

+91-8076749052, +91-7838349349 Email: info@srfsteleinfra.in, info@srfsteleinfra.com

Website : www.srfsteleinfra.in