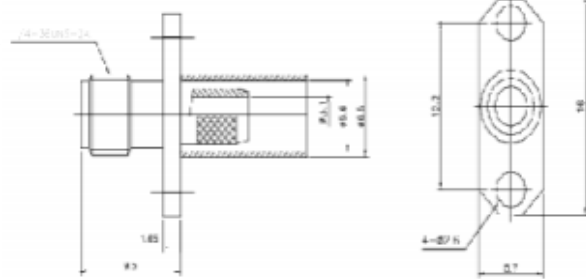


SMA FEMALE 2 HOLE for RG 58, RG223, RG400, LMR 200



ELECTRICAL & MECHANICAL SPECIFICATIONS		
Frequency Range	DC-18 GHz	
VSWR (max)	1.20 Max	
Insulation Resistance	5,000 MΩ Min	
Working Voltage	335V RMS, 50Hz, at sea level	
Characteristic Impedance	50 Ω	
Contact Resistance	Center Contact ≤ 3.0mΩ Outer Contact ≤ 2.5mΩ	
RF Leakage	-60dBm Min., 2~3GHz	
Dielectric Resistance	≥ 5000MΩ	
Durability	500 Mating	
Material & Plating		
	Material	Plating
Body	Brass	Gold Plating
Insulator	PTFE	-
Center conductor	BeCu	Gold Plating
Ferrule	Brass	Nickel Plating
Environmental		
Temperature Range	-40°C ~ +85°C	
RoHS	Compliant Yes	