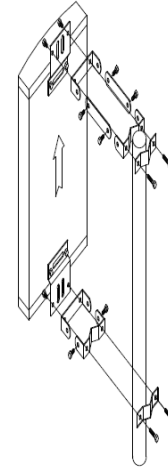


SRFS TELEINFRA



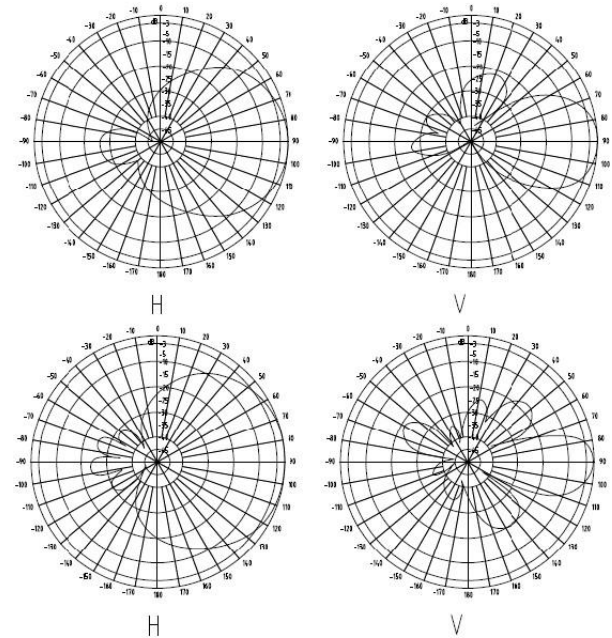
SISO Panel Antenna SRFS-SPN-693812-BZ

Installation Instruction



Electrical Specifications			
Frequency Range-MHz	698~960	1710~2690	3300-4000
Gain-dBi	13±1	14±1	13±1
Horizontal Beamwidth-°	65±5	50±5	55±5
Vertical Beamwidth-°	35±5	25±5	25±5
VSWR	< 1.8	< 1.8	< 1.8
Impedance -Ω	50		
Polarization	V		
Ratio-dB -dB	21/23/23		
Maximum Power -W	150		
Connector	N-Female		
Lighting Protection	DC		
Mechanical Specifications			
Antenna Dimension-mm	500*280*125		
Weight-kg	5.0		
Material	PVC		
Installation	Pole		
Working wind speed- m/s	36.9		
Working Temperature-°C	-40~+70		

Directional Pattern



Plot no 10 Shiv Vihar A Block Najafgarh Nala Road Vikasnagar Uttam Nagar New Delhi-110059

+91-9027232570, +91-7838349349 ✉ info@srfsteleinfra.in, info@srfsteleinfra.com

🌐 www.srfsteleinfra.in