

SRFS TELEINFRA

Fixed Attenuator SRFSFA18K1(DC18GHz)



Features:

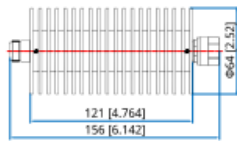
- *Low VSWR
- *High Attenuation Flatness

Applications:

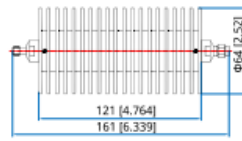
- * Wireless
- * Laboratory Test
- * Radar
- * Transmitter



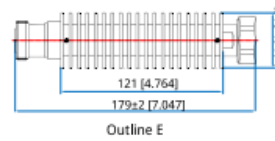
Outline Drawings



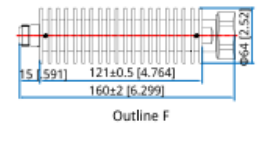
Outline A



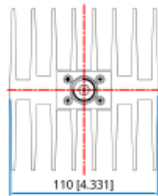
Outline C



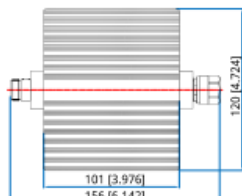
Outline E



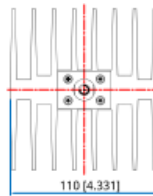
Outline F



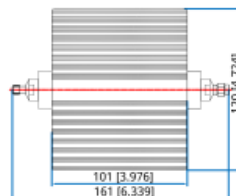
Outline B



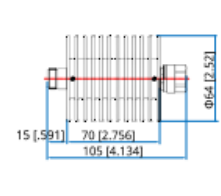
Outline D



Outline G



Outline H



Outline I

Unit: mm [in] Tolerance: ±1mm [±0.04in]

Frequency (GHz)	Attenuation						VSWR (max.)
	3	6~10	11~20	21~30	31~40	41~60	
DC~4	0.4	0.7	0.7	0.8	0.8	0.9-1.0	1.2
DC~8	0.5	0.8	0.8	0.9	0.9	1.0	1.25
DC~12.4	0.6	0.9	0.9	1.0	1.0	1.1	1.35
DC~18	0.8	1.5	1.5	1.3	1.3	1.4	1.45

Electrical & Mechanical Specifications

Frequency:	DC~18GHz
Attenuation:	3, 6~60dB
Impedance:	50Ω
Average Power*1:	100W@25°C max.
RF Connectors:	N, SMA, 7/16(DIN)
Temperature:	-55~+125°C



Plot no 10 Shiv Vihar A Block Najafgarh Nala Road Vikasnagar Uttam Nagar New Delhi-110059

+91-9027232570, +91-7838349349 ✉ info@srfsteleinfra.in, info@srfsteleinfra.com

🌐 www.srfsteleinfra.in