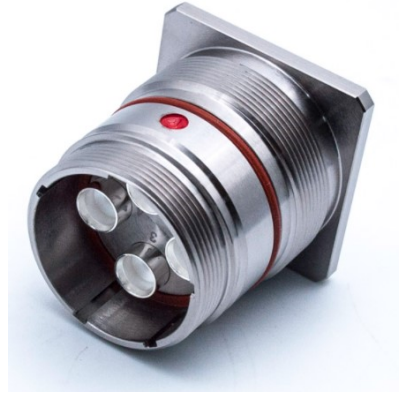


# SRFS TELEINFRA



## Cluster Connector MQ4 Jack For RG 141 Cable (SRFSCONMQ4RG141)



Electrical Specification				
Frequency Range		DC-12GHz		
Impedance		50Ω		
Frequency		DC-2.7GHz	2.7-4.2GHz	4.2-6GHz
VSWR	Plug	≤1.12	≤1.15	≤1.30
	Jack	≤1.10	≤1.15	≤1.30
Insertion loss		≤0.05vfdB		
Insulation Resistance		≥5000MΩ		
Dielectric Withstanding Voltage		≥1000V AC		
Isolation		≥90dB		
Environmental Specification				
Operating & Storage Temperature Range		-55°C to +125°C		
Environmental Compliance		RoHS		
Water tightness		IP68(1m water depth/24hours)		
Salt-fog test		≥720h(Neutral salt spray)		
Material Specification				
Body	Brass	Ni-Sn Alloy		
Center Contact	BeCu	Silver		
Outer Contact	Brass	Silver		
Insulator	PTFE	-		
Nut	-	-		



Plot no 10 Shiv Vihar A Block Najafgarh Nala Road Vikasnagar Uttam Nagar New Delhi-110059

+91-9027232570, +91-7838349349 [info@srfsteleinfra.in](mailto:info@srfsteleinfra.in), [info@srfsteleinfra.com](mailto:info@srfsteleinfra.com)

[www.srfsteleinfra.in](http://www.srfsteleinfra.in)