

## Wideband Log Periodic Dipole Array Model no.: SRFS- LPDA-A0016

### Product Description

The LPDA-A0016 is a general purpose wideband transmitting and receiving 80 MHz to 2 GHz log-periodic dipole array (LPDA) antenna. It can be used as a spectrum monitoring antenna. It is also used for EMC emission and susceptibility testing

### Product Features

- High gain
- Low and stable VSWR
- Vertical or horizontal polarization
- Wide frequency range
- Easy to assemble
- Elements fit neatly into a carry bag
- Stylish and rugged design
- Balanced feed point

### Electrical Specifications

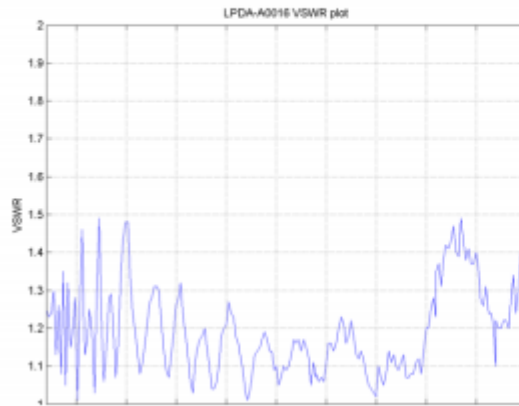
Frequency range	80 – 2000 MHz
VSWR	< 2.5:1
Feed power handling	300 W
Nominal input impedance	50 Ω
Connector	N-type female
Gain	> 8 dBi (typically)
E-plane 3 dB beamwidth	60°
H-plane 3 dB beamwidth	110°
Polarization	Linear (vertical or horizontal)
<b>Mechanical Specifications</b>	
Dimensions	2200 mm x 2000 mm
Material	Aluminium, stainless steel and Tufnol
Mounting method	Bracket for 50 mm – 100 mm poles
<b>Environmental Specifications</b>	
Wind survival	160 km/h
Temperature operational	– 20 °C to + 55 °C



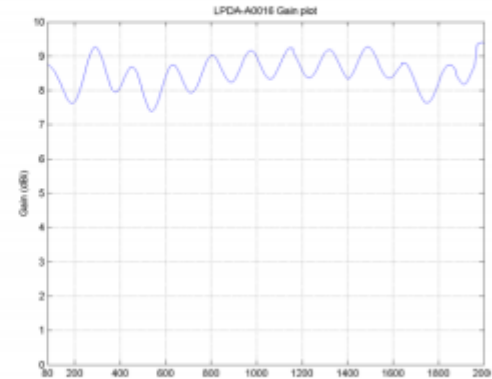
## Wideband Log Periodic Dipole Array Model no.: SRFS- LPDA-A0016

### VSWR, GAIN GRAPHS AND RADIATION PATTERNS:

#### VSWR:

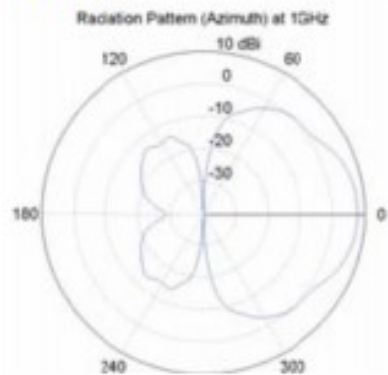


#### Gain:

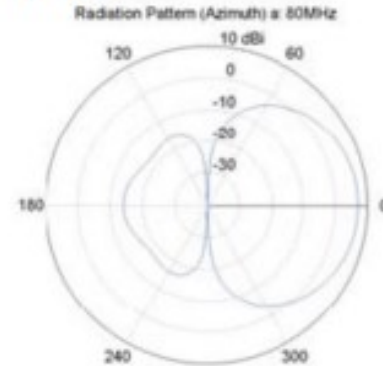


#### Radiation patterns:

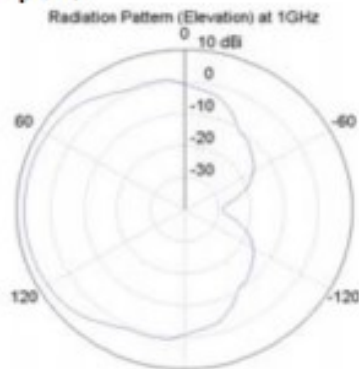
##### E-plane:



##### E-plane:



##### H-plane:



##### H-plane:

