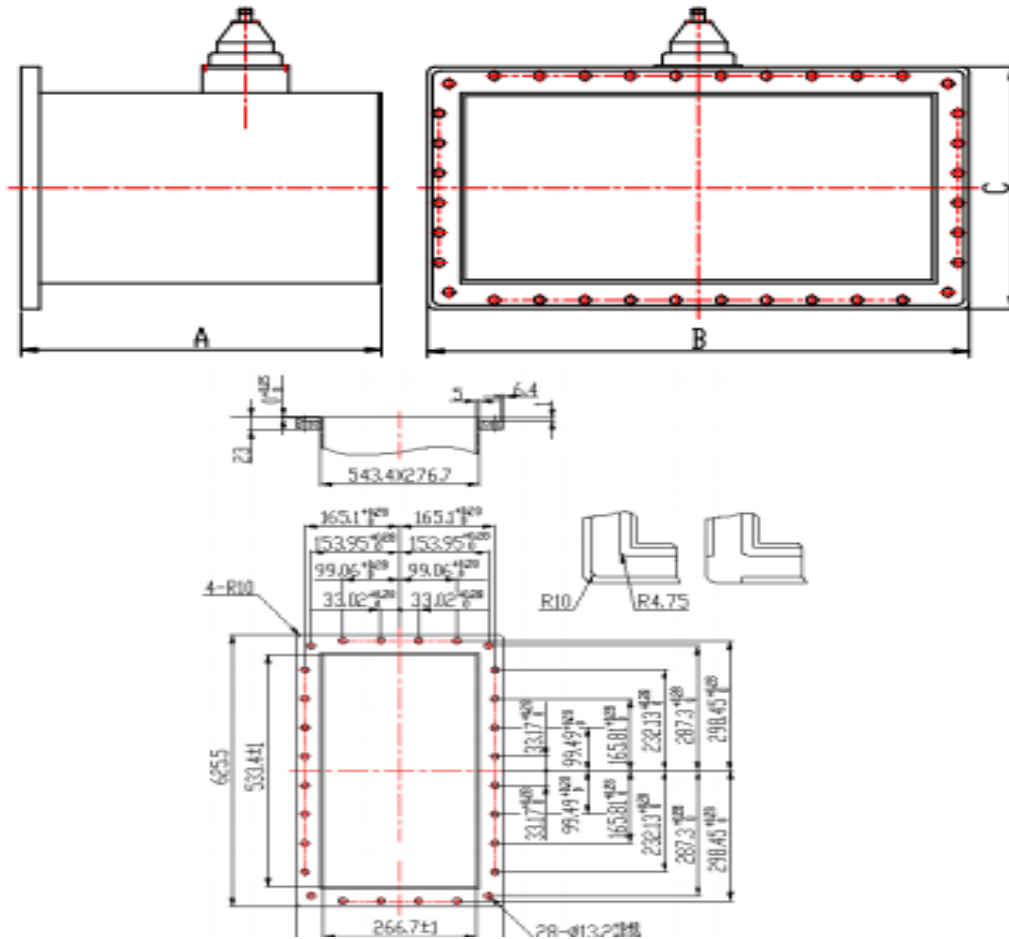


WR2100 Waveguide to Coaxial Adapter Right Angle Part no. SRFS4WCANKPA



Mechanical Specifications	
Waveguide Type	WR2100
Connector type	N Female
Material	Aluminum
Inside Finish	Chromate conversion
Outside Finish	Anticorrosion black paint
Flange Type	FDP4 (Cover)
Dimensions (A*B*C)	450*625.5*358.8 mm
Electrical Specifications	
Frequency Range	0.35-0.53GHz
VSWR (Max)	1.30