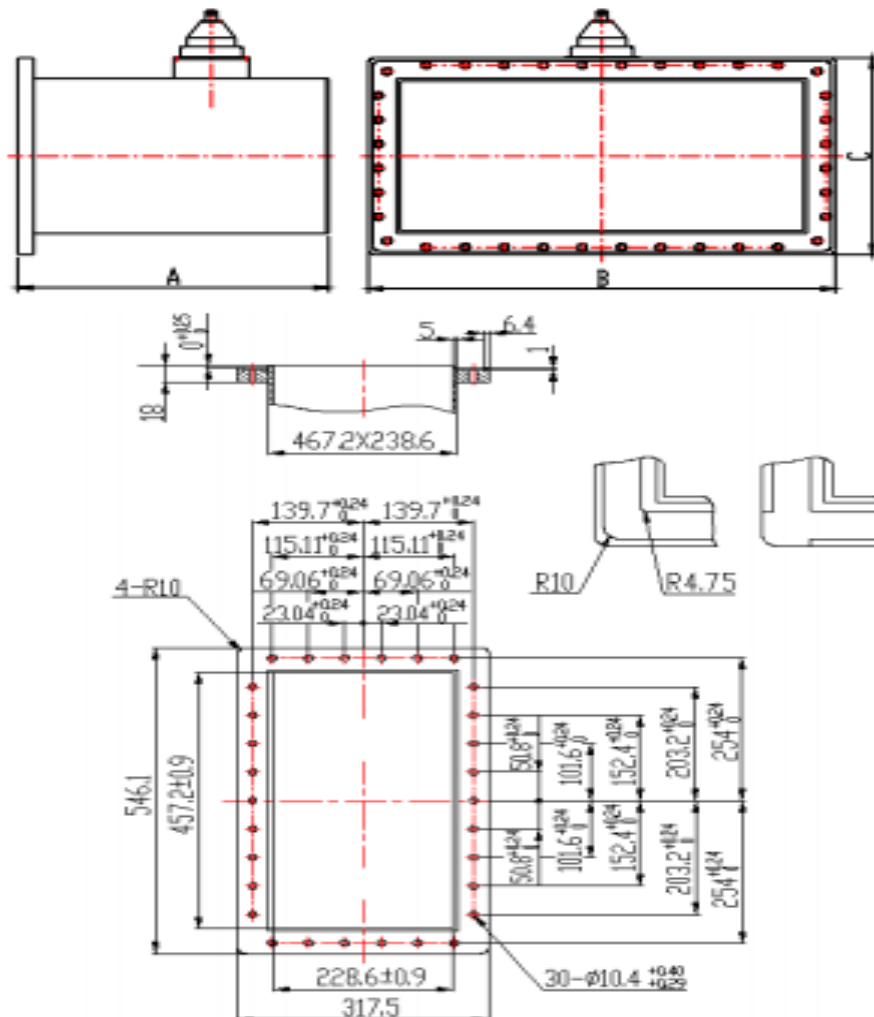


WR1800 Waveguide to Coaxial Adapter Right Angle Part no. SRFS5WCANKPA



Mechanical Specifications	
Waveguide Type	WR1800
Connector type	N Female
Material	Aluminum
Inside Finish	Chromate conversion
Outside Finish	Anticorrosion black paint
Flange Type	FDP5 (Cover)
Dimensions (A*B*C)	400*546.1*317.5 mm
Electrical Specifications	
Frequency Range	505.8 ± 10 MHz
VSWR (Max)	1.20