

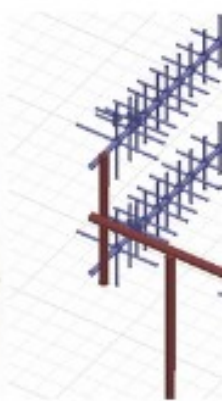
# SRFS TELEINFRA

► Plot no 10 Shiv Vihar A Block Najafgarh Nala Road Vikasnagar Uttam Nagar New Delhi-110059

► Phone: +91-9027232570/+91-8800726650

► Email: [info@srfsteleinfra.in](mailto:info@srfsteleinfra.in) , [info@srfsteleinfra.com](mailto:info@srfsteleinfra.com)

► Website: [www.srfsteleinfra.in](http://www.srfsteleinfra.in)



# Company Introduction

**SFRS TELEINFRA** was set-up in 2019. However, the management team and other team members have a history in RF industry from the year 1995. In the year 2019, the team and assets were set-up into the new entity under the name of: SRFS TELEINFRA.

1995: Started supply of RF Connector, RF Cable, RF Adaptor, Antenna to Indian/Overseas market from the previous organization.

2000: started Supply of IBS and BTS Components to Indian/Overseas market from the previous organization.

2005: Started in building Solutions , including RF Survey , Design, implementation, drive test and optimization.

2010: started supply in DRDO,ISRO, TBRL, BEL,ITI ,Limited with previous organization

2012: Spun-off into a separate entity: Signity RF Solutions to focus on Hi-Rel type Interconnects with full dedication and vision for meeting the high quality and high reliability standards of our military and aerospace customers.

2014 : started supply of RF & MW components in middle east and european market.

2017: Introduced innovative mixed signal RF+Electrical Harnesses in MIL-24308 and MIL-38999 versions. A single Harness can include multiple signals like Fiber, RF, Ethernet or and/or Electrical

2019: Start a new organization with state of art facility in new delhi for antenna and cable assembly, manufacturing , we believe in "Make in India" and it is our endeavor to support this campaign by contributing our little bit.

2020: At pandemic situation our R&D team developed a system For Indian Army to block IED Communication , anti drone gun with using our high-quality antenna and counter surveillance technique

# HLF Cable

## ➔ Product Catalogue



Low Loss Flexible HLF 100 Coaxial Cable



Low Loss Flexible HLF 195 Coaxial Cable



Low Loss Flexible HLF 240 Coaxial Cable



Low Loss Flexible HLF 400 Coaxial Cable



Low Loss Flexible HLF 900 Coaxial Cable



Low Loss Flexible HLF 500 Coaxial Cable



Low Loss Flexible HLF 600 Coaxial Cable



# RG Cable

## ➤ Product Catalogue



RG 142 Cable



RG 174 Cable



RG 174 Cable



RG 188 Cable



RG 213 Cable



RG 217 Cable



RG 223 Cable



RG 6 CABLE DS



RG 58 CABLE



RG 59 CABLE



RG 179 CABLE



RG 316 CABLE



RG 316 CABLE DS (DOUBLE SHIELDED)



RG 400 CABLE DS



1.13 mm Low Loss Co-axial Cable



# Feeder Cable

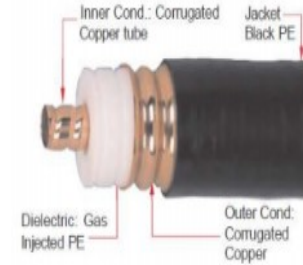
## ➡ Product Catalogue



1/2" Hansen Feeder Cable



7/8" Hansen Feeder Cable



1-5/8" Hansen Feeder Cable



1/2" Super Flex Cable



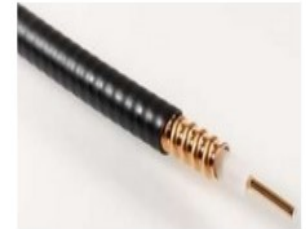
1/4" Feeder Cable



1-1/4" Feeder Cable



1-5/8" Super Flex



1/4" Super Flex



7/8" Super Flex Feeder Cable



7/8" Feeder Cable (Aluminum)

# SUCO Semi Rigid & Semi Flexible Cable

## ➤ Product Catalogue



.047 SEMI RIGID CO-AXIAL  
CABLE



.085 SEMI RIGID CO-AXIAL CABLE



.034 SEMI RIGID CO-AXIAL CABLE



RG 402 (0.141") Semi -  
Flexible Cable



SUCO FLEX 300 SERIES  
CABLE



.141 SEMI RIGID CO-AXIAL CABLE



BT 3002 CO-AXIAL  
CABLE 500 m



.250 SEMI RIGID CO-AXIAL  
CABLE



SM 250 CABLE



SUCOFORM 86 FEP

# SMA Connector

## ➔ Product Catalogue



**SMA Female Bulkhead  
Right Angle Connector  
For P.C.B**



**SMA Male Crimp  
Connector For LMR300  
Cable**



**SMA Male Crimp  
Connector For  
LMR400 Cable**



**SMA-Male-right-  
angle-crimp-  
connector-for-rg-316**



**SMA Female  
Bulkhead Crimp  
Connector**



**SMA Male RA for RG316 /  
174 / LMR 100 Crimp  
Connector**



**SMA Female Crimp For  
RG58 / LMR 200 CABLE**



**SMA Female 4H (12.75sq.)  
Flange Solder Pot**



**SMA Female 4 Hole for  
RG141 SUCO**



**SMA Female RA for LMR  
200/RG 58 Crimp Connector**



**SMA Female RA for RG  
316/Rg174 Crimp Connector**



**SMA Male RA for RG58/LMR  
200 Crimp Connector**



**SMA Male RA RP LMR  
200/RG 58 Crimp**



**SMA Male RP for RG 58 /  
LMR 200 Crimp Connector**



**SMA Female Straight  
PCB Mount Connector**



**SMA Female End  
Launch 1.6T**



**SMA Female RA  
Connector for P.C.B  
Mount**



**SMA Female Edge  
Mount Connector**



**SMA Male Crimp  
Connector For LMR200  
Cable**



**SMA MALE FOR LMR  
100, RG 316  
CONNECTOR**



# BNC Connector

## ➔ Product Catalogue



**BNC FEMALE  
BULKHEAD FOR RG 58**



**BNC MALE  
STRAIGHT FOR RG  
58**



**BNC(F) Bulkhead  
Crimp RG316**



**BNC(F) Bulkhead  
RG58, RG223,  
LMR200**



**BNC(F) Clamp  
RG58, RG223,  
LMR200**



**BNC(M)  
STRAIGHT SF141,  
SR141, RG402**



**BNC(F) RG316**



**BNC(F) RG59**



**BNC(M) CLAMP RG58,  
RG223, LMR200**



**BNC(M) CLAMP  
RG316**



**BNC(M) RA RG58,  
RG223, LMR200**



**BNC(M) STRAIGHT  
SF085, SR085,  
RG405**

# N Connector

## ➔ Product Catalogue



**N Male Connector for  
7/8" Feeder Cable**



**N Female Connector  
for 7/8" Feeder Cable**



**N Female Clamp  
Connector for 1/2" Foam  
Feeder Flexible**



**N Male Clamp Connector  
for LMR400 Cable**



**N Female 4H (25 Sq.) Flange  
Solder Pot**



**N Female for 1/4"  
LDF Connector**



**N Female for 1/4" SF  
Connector**



**N Female 4 Hole LMR  
200 Crimp Connector**



**N Female 4 Hole for RG  
316 / RG 174 / LMR 100  
Crimp Connector**



**N  
Female 17.5mm SQ Flange  
Connector**



**N Female Crimp  
Connector For  
LMR200 Cable**



**N Male Crimp  
Connector For LMR200  
Cable**



**N Female RG 213 Clamp  
Connector**



**N Female 7/8"  
Feeder Connector**



**N Female Crimp  
Connector for LMR  
240**



**N Female for 1-5/8"  
LDF Connector**



**N Male Connector for  
1-5/8" Feeder Cable**

## ➔ Product Catalogue



**N Male 1/4" Super Flex Connector**



**N Female R/A Crimp Connector for LMR 400**



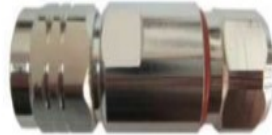
**N Female for RG 213 Crimp Connector**



**N Female for LMR 300 Crimp Connector**



**N Male 1/4" Feeder Connector**



**N Male 1/2" Super Flex Connector**



**N Male for LMR 300 Clamp Connector**



**N Male for LMR 300 Crimp Connector**



**N Male Crimp Connector for LMR 400**



**N Male LMR 240 Clamp Connector**



**N Male LMR 200 Crimp**



**N Male R/A for RG316, RG174, RG179, LMR 100 CRIMP**



**N Male R/A 1/4" Super Flex Connector**



**N Male R/A 1/2" Super Flex Connector**



**N Male R/A for LMR 400 Crimp Connector**



**N Male RA CLAMP CONNECTOR FOR LMR 400**



**N Male R/A for LMR 200 Crimp Connector**



# DIN Connector

## ➔ Product Catalogue



7/16 DIN Male Right Angle Crimp  
Connector For LMR200 Cable



7/16 Din Male 4H (32mm) Flange  
Solder Pot



DIN Male Connector for  
7/8" Cable



7/16 DIN Female Connector For  
1/2" Foam Feeder (Flexible)  
Cable



7/16 DIN Female Connector  
for 1/2"  
Super Flex Cable



7/16 DIN Female Connector  
for 1/4" SF Cable



7/16 DIN Female LMR  
400 Crimp Connector



7/16 DIN Female Straight  
Connector for 1-1/4" Feeder  
Cable



7/16 DIN Female  
Connector for 1-5/8"  
Feeder Cable



7/16 DIN Female  
Straight Connector for  
7/8" Feeder Cable



7/16 DIN Female  
Straight Connector for  
7/8" SF Feeder Cable



7/16 DIN Male Connector for 1/2"  
Super Flex Coaxial Cable



7/16 DIN Male Connector for  
3/8" Feeder Cable



7/16 DIN Male Connector for  
7/8" Super Flex Cable



7/16 DIN Male Crimp  
Connector for LMR 240



7/16 DIN M Crimp  
Connector for LMR 400

# DIN Connector

➔ Product Catalogue



**7/16 DIN Male LMR 200  
Crimp Connector**



**7/16 DIN Male RA Connector  
for 1/2" Super Flex Cable**



**7/16 DIN M RA for LMR 400  
Crimp Connector**



**7/16 DIN Male Clamp  
Connector For 1/2" Foam  
Feeder (Flexible) Cable**



**7/16 DIN Male Straight  
Connector for 1-5/8" Feeder  
Cable**



**7/16 DIN Male Straight  
Connector for 1-1/4" Feeder  
Cable**



**7/16 DIN Male RA  
Connector for 3/8" SF  
Feeder Cable**

# MCX & MMCX Connector

## ➔ Product Catalogue



**MCX Female Straight  
Connector For PCB  
Mount**



**MMCX Female Straight  
Connector For P.C.B Mount**



**MMCX Male Crimp  
Connector For RG316  
RG174/RG188/LMR100 Cable**



**MCX Male Right Angle  
Crimp Connector RG316  
/RG174/RG188/LMR100**



**MMCX Male for  
RG178**



**MMCX Male Right  
Angle for RG174, RG316**



**MCX Female BH  
Receptable**



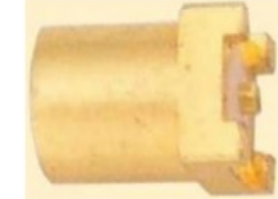
**MCX Female End  
Launch 1.6T**



**MCX Female PCB 4R**



**MCX Female RA PCB**



**MMCX Female PCB SMT**



**MMCX Male RG174,  
RG316**



**MMCX Female For RG178**



**MMCX Female For RG316,  
RG174**



**MMCX Female Straight  
SF047, SR047**



**MMCX Male End Launch**



**MMCX Male Right  
Angle RG178**



# SAA & SMB Connector

## ➔ Product Catalogue



**SAA FEMALE 2 HOLE  
CONNECTOR**



**SAA FEMALE 4 HOLE  
CONNECTOR**



**SAA FEMALE BT-  
3002 Crimp**



**SAA FEMALE B/H RG-  
141 Crimp**



**1.0/2.3 (SAA) FEMALE  
EDGE LAUNCH PCB**



**1.0/2.3 (SAA) MALE R/A  
CRIMP CONNECTOR FOR  
RG174/RG316/LMR 100**



**1.0/2.3 (SAA) MALE CRIMP  
CONNECTOR FOR RG 179  
DOUBLE BRAIDED**



**1.0/2.3 (SAA) MALE  
CRIMP CONNECTOR  
FOR RG 58**



**1.0/2.3 (SAA) FEMALE  
BULKHEAD R/A PCB**



**SAA FEMALE PCB  
MOUNT**



**1.0/2.3 (SAA) MALE  
CRIMP CONNECTOR  
FOR RG 240**



**1.0/2.3 (SAA) MALE  
CRIMP CONNECTOR  
FOR RG 316**



**SMB MALE STRAIGHT  
CONNECTOR FOR RG  
174 , RG 316**



**SMB MALE R/A PCB  
CONNECTOR**



**SMB MALE R/A 2  
HOLE RG 316  
CONNECTOR**



**SMB MALE PCB  
CONNECTOR**



**SMB MALE B/H  
CONNECTOR FOR RG 174 ,  
RG 316**



**SMB FEMALE R/A  
PCB CONNECTOR**



**SMB FEMALE R/A  
RG 174, RG 316  
CONNECTOR**

# TNC Connector

## ➔ Product Catalogue



**TNC Female 4H (17.5 Sq.)  
Flange Solder Pot**



**RP TNC FEMALE BULKHEAD  
CRIMP CONNECTOR**



**RP TNC FEMALE CRIMP  
CONNECTOR FOR RG  
58, RG141 & LMR 195**



**TNC FEMALE BH RG58,  
RG223, RG400, LMR200**



**TNC MALE CLAMP  
CONNECTOR FOR LMR  
400**



**TNC MALE CRIMP  
CONNECTOR FOR  
LMR 400**



**TNC MALE CRIMP  
CONNECTOR FOR RG 58,  
RG 141 & LMR 195**



**TNC MALE FOR  
RG58, RG223, LMR  
200**



**TNC MALE FOR  
RG316, RG174**



**TNC MALE R/A FOR  
RG58, RG223, LMR 200**



**TNC MALE R/A FOR  
RG316, RG174**

# EIA Flange Connector

## ➔ Product Catalogue



**1-5/8" EIA FLANGE CONNECTOR FOR  
7/8" FOAM FEEDER CABLE**



**7/8" EIA FLANGE  
CONNECTOR FOR 1/2"  
FEEDER CABLE**



**1-5/8" EIA FLANGE R/A  
CONNECTOR FOR 1-5/8"**



**7/8" EIA FLANGE CONNECTOR  
FOR 1-5/8" FOAM FEEDER CABLE**



**7/8" EIA FLANGE CONNECTOR  
FOR 1/2" SUPER FLEXIBLE  
CABLE**



**7/8" EIA FLANGE CONNECTOR  
FOR 7/8" FOAM FEEDER CABLE**



# FME Connector

## ➔ Product Catalogue



**FME FEMALE CRIMP  
CONNECTOR FOR LMR 195**



**FME FEMALE CRIMP  
CONNECTOR FOR LMR 240**



**FME FEMALE CRIMP CONNECTOR  
FOR RG 58**



**FME FEMALE CRIMP  
CONNECTOR FOR RG 174 &  
LMR 100**



**FME MALE CRIMP  
CONNECTOR FOR LMR  
195**



**FME MALE CRIMP  
CONNECTOR FOR  
RG 174 & LMR 100**



**FME MALE CRIMP  
CONNECTOR FOR RG 58**



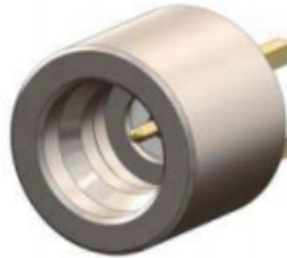
**FME MALE CRIMP  
CONNECTOR FOR  
LMR 240**

# SMP Connector

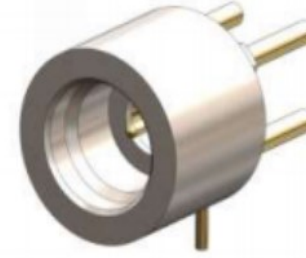
## ➔ Product Catalogue



**SMP FEMALE R/A FOR  
.086 CABLE**



**SMP MALE PCB MOUNT  
(4 LEG, STRAIGHT  
CONTACT)**



**SMP MALE R/A PCB MOUNT  
(4 LEG, R/A CONTACT)**



**SMP R/A FEMALE FOR  
RG 178, RG 316 CABLE**



**SMP STRAIGHT FEMALE FOR  
.047, .085(SNAP IN PANEL,  
FLOAT MOUNT)**



**SMP STRAIGHT MALE PCB  
EDGE MOUNT**



**SMP STRAIGHT MALE 2 HOLE  
FLANGE MOUNT**



**SMP STRAIGHT FEMALE  
CONNECTOR FOR RG 178, RG 316  
CABLE**

# BMA & SMZ Connector

## ➔ Product Catalogue



**BMA FEMALE EDGE  
LAUNCH CONNECTOR**



**BMA MALE FLANGE MOUNT 4  
HOLE CONNECTOR**



**BMA MALE BULKHEAD  
CONNECTOR FOR .085  
CABLE**



**BMA MALE PCB THRU-  
HOLE CONNECTOR R/A**



**BMA MALE PCB THRU-  
HOLE CONNECTOR**



**BMA MALE FLANGE MOUNT  
2 HOLE FOR .085 CABLE**



**SMZ FEMALE SOLDER CRIMP  
CONNECTOR FOR BT-3002 CABLE**



**SMZ FEMALE R/A PCB**



**SMZ FEMALE R/A CRIMP  
CONNECTOR FOR BT-3002  
CABLE**



**SMZ FEMALE CRIMP FOR  
RG174, RG316, LMR100**



**SMZ FEMALE CRIMP  
CONNECTOR FOR RG59**



**SMZ FEMALE CRIMP CONNECTOR  
FOR BT-3002 CABLE**



# F , UHF & Mini UHF Connector

## ➔ Product Catalogue



**UHF FEMALE 4-HOLE  
CRIMP CONNECTOR FOR  
RG 58/141/142**



**UHF FEMALE CRIMP  
CONNECTOR FOR LMR  
240**



**UHF FEMALE CRIMP  
CONNECTOR FOR  
LMR 400**



**UHF FEMALE  
STRAIGHT PANEL  
MOUNT SOLDER**



**UHF MALE CRIMP  
CONNECTOR FOR LMR  
240**



**F MALE CRIMP  
CONNECTOR FOR  
RG58, LMR 195**



**UHF MALE CRIMP  
CONNECTOR FOR LMR  
400**



**UHF FEMALE CRIMP  
CONNECTOR FOR LMR 600**



**UHF MALE CRIMP  
CONNECTOR FOR RG58 /  
141 / 142, LMR 195**



**MINI-UHF MALE  
CRIMP CONNECTOR  
LMR 240**



**MINI-UHF MALE CRIMP  
CONNECTOR FOR RG  
58/141/142, LMR 195**



**F FEMALE CRIMP  
CONNECTOR FOR  
RG58, LMR 195**

# GSM Antenna

## ➔ Product Catalogue



**2 dBi GSM Rubber Duck Antenna with SMA Male RA**



**2 dBi GSM Rubber-Duck Antenna with SMA Male**



**3 dBi GSM Rubber Duck Antenna with SMA Male Movable**



**3 dBi GSM Rubber-Duck Antenna with SMA Male RA**



**3 dBi GSM Rubber-Duck Antenna with SMA Male**



**5 dBi GSM Rubber-Duck Antenna with SMA Male Movable**



**Quad Band GSM 9dBi Rubber-Duck Antenna with SMA Male Movable**



**800-2700MHz 3 dBi Magnetic Mount Antenna with SMA RG 174 Cable**



**3 dBi Magnetic Base Rubber Duck Antenna**



**6-dBi-GSM-Magnetic-Antenna-Spring-Typ**



**9 dBi Magnetic Base Rubber Duck Antenna**



**GSM STICKER ANTENNA 900 / 1800 MHz**

# GPS Antenna

## ➔ Product Catalogue



**28 dBi External GPS Magnetic  
Antenna with SMA (M)**



**28 dBi External GPS Magnetic  
Antenna with SMA (M) RA**



**GPS Internal Antenna (15mm\*  
15mm\*6.5mm)  
Model No.SRFS-IGPS28C-60**



**38 dBi GPS Marine  
Antenna**



**GPS Internal Antenna  
(25mm\* 25mm)**



**28 dBi External GPS Magnetic  
Antenna with MCX RA Connector**



**28 dBi External GPS Magnetic  
Antenna with Fakra Connector**



# Combo & Wi-Fi Antenna

## → Product Catalogue



**GPS/GSM COMBO ANTENNA**



**GPS/GSM COMBO ANTENNA**



**2.4 GHz 2 dBi Rubber Duck Antenna**



**2.4 GHz 3 dBi Rubber Duck Antenna**



**2.4 GHz 5 dBi Rubber Duck Antenna RP-SMA Male Connector**



**2.4 GHz 9 dBi SMA-Male High Performance "Rubber Duck" Wireless LAN Antenna**



**2.4 GHz Wi-Fi 5dBi Rubber Duck SMA (M) movable body**



**9 dBi RFID Rubber-Duck Antenna with SMA Male Movable**



**800-2700MHz 6 dBi Magnetic Mount Antenna with SMA RG 174 Cable**

# 3G-4G, All Band (800 – 2500 MHz) Antenna

## ➔ Product Catalogue



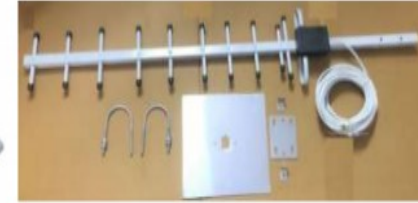
**6 dBi Magnetic Base  
Rubber Duck Antenna**



**2.4 GHz 5 dBi Rubber Duck  
Antenna RP-SMA  
Male Connector**



**698-960/1710-2700MHz  
3dBi Omni Ceiling  
Antenna**



**DIRECTIONAL YAGI  
ANTENNA - 18 dBi**



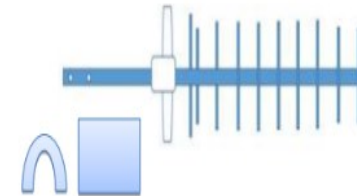
**SOLID ELEMENT DIRECTIONAL  
YAGI ANTENNA - 21 dBi**



**2.4 GHz Wi-Fi 5dBi Rubber  
Duck SMA (M) movable  
body**



**DIRECTIONAL YAGI  
ANTENNA - 12dBi**



**DIRECTIONAL YAGI  
ANTENNA - 18 dBi Long  
Boom**



**698-2700MHz 12 dBi Patch Panel  
Antenna with SMA (M) Outdoor**



# Low Pim In Building Antenna

## ➔ Product Catalogue



Low PIM Log Periodic  
Antenna



698-2700MHz Low PIM  
Log Periodic Antenna



698-4000MHz Low PIM  
Slim Omni Antenna



698-2700MHz Low PIM  
Indoor Panel Antenna



698-2700MHz Low PIM  
Card Omni Antenna



698-2700MHz Low PIM  
MIMO Omni Antenna



698-2700MHz Low PIM  
MIMO Panel Antenna



698-2700MHz Low PIM  
MIMO Panel Antenna



698-2700MHz Low PIM  
Slim Omni Antenna



698-4000MHz 3dBi Omni  
Ceiling Antenna



698-2700MHz Low  
PIM MIMO Indoor  
Dome Antenna



698-2700MHz Low PIM  
Indoor Panel Antenna



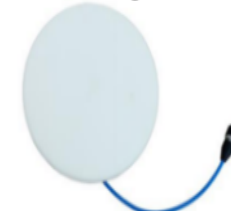
698-2700MHz Low PIM  
Indoor Omni Antenna



698-2700MHz Low PIM  
Indoor Dome Antenna



698-960/1710-4000MHz  
MIMO Ceiling Antenna



698-2700MHz Low PIM  
Slim Omni Antenna



698-2700MHz Low  
PIM Card Omni  
Antenna



# RFID, Low Pim In Building Antenna

## ➔ Product Catalogue



698-2700MHz Low PIM  
Indoor Ceiling Antenna



380-6000MHz Low PIM  
Indoor Omni Antenna



433 MHz 5 dBi Rubber  
Duck Antenna SMA  
Male Connector



433 MHz 3 dBi Rubber Duck  
Antenna SMA Male Right  
Angle Connector



433 MHz 5 dBi Rubber Duck  
Antenna SMA Male Connector



9 dBi RFID Rubber-Duck  
Antenna with SMA Male  
Movable

# Repeater Antennas 698 ~ 2700 MHz

## ➔ Product Catalogue



1710-2700MHz  
11dBi MIMO  
Panel Antenna



698-960/1710-2700MHz  
12dBi MIMO Sector  
Antenna



698-960/1710-2700MHz  
11dBi Directional  
LPDA Antenna



698-960/1710-2700MHz  
8/10dBi MIMO Sector  
Antenna



698-960/1710-2700MHz  
8/10dBi Directional  
Sector Antenna



698-960/1710-  
2700MHz 7dBi  
Outdoor Panel  
Antenna



698-960\_1710-2700MHz-  
7dBi-Indoor-Panel-  
Antenna



698-960/1710-2700MHz  
7dBi Directional Panel  
Antenna



698-960/1710-  
2700MHz 3dBi Omni  
Ceiling Antenna



698-960/1710-  
2700MHz 6-9dBi  
MIMO Panel  
Antenna



698-960/1710-  
2700MHz 6/8dBi  
MIMO Panel  
Antenna



698-960/1710-  
2700MHz 4dBi  
Omni directional  
Antenna

# Repeater Antennas 698 ~ 2700 MHz

## ➔ Product Catalogue



698-960/1710-2700MHz 4dBi Omni Ceiling Antenna



698-960/1710-2700MHz 4dBi Marine Antenna



698-960/1710-2700MHz 3dBi Patch Antenna



698-960/1710-2700MHz 3dBi Omni Ceiling Antenna



698-960/1710-2700MHz 3dBi Omni Ceiling Antenna



698-960/1710-2700MHz 3.5dBi Omni Antenna



698-960/1710-2700MHz 3dBi MIMO Omni Ceiling Antenna



698-960/1710-2700MHz 3dBi Omni Ceiling Antenna



698-960/1710-2700MHz 3dBi Omni Ceiling Antenna



698-960/1710-2700MHz 2.5/5dBi MIMO Omni Antenna



698-960/1710-2700MHz 5dBi Directional Ceiling Antenna



698-960/1710-2700MHz MIMO Ceiling Antenna



# Repeater Antennas 698 ~ 2700 MHz

## ➤ Product Catalogue



**698-960/1710-2700MHz  
12dBi MIMO Sector  
Antenna**



**696/960-1710-2700MHz 6dBi  
Omnidirectional Antenna**



**698-2700MHz 12 dBi Patch Panel  
Antenna with SMA (M) Outdoor**



**698-960/1710-2700MHz 4dBi  
Omnidirectional Antenna**

# Magnetic Base Antenna

## ➔ Product Catalogue



800-2700MHz 6 dBi Magnetic Mount  
Antenna with SMA RG 174 Cable



800-2700MHz 6 dBi Magnetic Mount  
Antenna with SMA RG 58 Cable



6 dBi Magnetic Base Rubber Duck  
Antenna



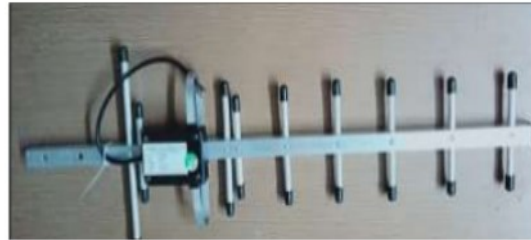
GPS/GSM COMBO ANTENNA



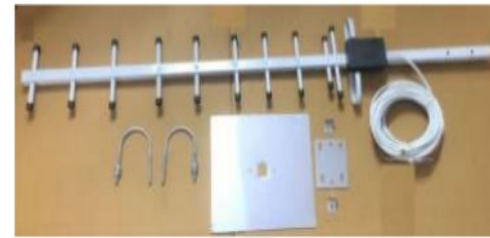
800-2700MHz 8 dBi Magnetic Mount  
Antenna with SMA RG 58 Cable

# Yagi Antenna

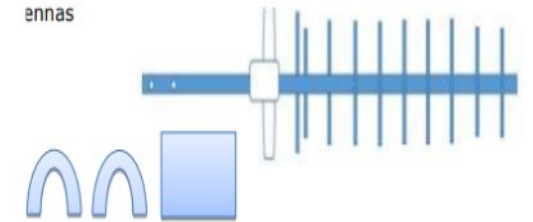
## ➔ Product Catalogue



**DIRECTIONAL YAGI ANTENNA - 12dBi**



**DIRECTIONAL YAGI ANTENNA - 18 dBi**



**698-2700MHz 12 dBi Patch Panel Antenna with SMA (M) Outdoor**



**SOLID ELEMENT DIRECTIONAL YAGI ANTENNA - 21 dBi**



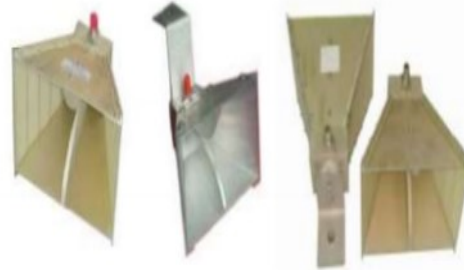
**698-2700MHz 12 dBi Patch Panel Antenna with SMA (M) Outdoor**





# Horn Antenna

## ➔ Product Catalogue



**Wideband Dual-ridged Horn Antenna**



**Antenna bracket for standard gain horn antenna**



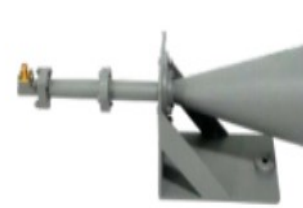
**Ultra Broad wall Dual Linear Polarization Four Ridged Antenna**



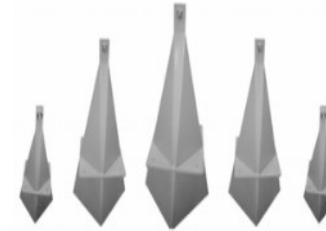
**Standard Gain Yagi Antenna-10dB**



**Conical Horn Antenna**



**Circular Polarization Standard Horn Antenna**



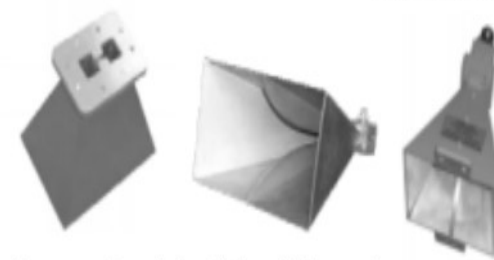
**Low side lobe diagonal horn antenna**



**Wideband Horn Antenna**



**Mini wideband double ridged antenna**



**Octave Double Ridged Horn Antenna**



**Dual Linear Polarization Horn Antenna**

# Horn Antenna

## Product Catalogue



**Open Boundary Dual Linear Polarization Four Ridged Antenna**



**Conical Horn Lens Antenna**



**Pyramidal Horn Lens Antenna**



**Point Focusing Horn Lens Antenna**



**Ladder Membrane type Dual Circular Polarization Horn Antenna**



**Feed Irradiation Lens Antennas**



**Corrugated Horn and Multi Mode Horn Antenna**



**Circular Polarization Horn Antenna**



**Dual Linear Polarization Horn Antenna**



**Dual Circular Polarization Horn Antenna**



**Dual Circular Polarization Horn Antenna**



**Dual Linear Polarization Orthogonally Horn Antenna**

# RF Adaptor

## ➔ Product Catalogue



**BNC Female to Female to  
Female T Adaptor**



**BNC Female to BNC  
Female Adaptor**



**BNC FEMALE TO FEMALE  
BULKHEAD ADAPTOR**



**N Male to N Male  
Adaptor**



**N Female to N Female  
Connector Adaptor**



**N Male to N Female  
Connector Adaptor**



**N FFM T type Adaptor**



**SMA MALE TO SMA  
MALE ADAPTOR**



**SMA FEMALE TO SMA  
FEMALE ADAPTOR**



**SMA MALE TO SMA  
FEMALE ADAPTOR**



**SMA FEMALE TO SMA FEMALE  
4 HOLE ADAPTOR**



**SMA FEMALE TO MALE  
TO FEMALE ADAPTOR**



**SMA FEMALE TO FEMALE TO  
FEMALE ADAPTOR**



**SMA MALE TO SMA MALE  
RA ADAPTOR**



# Sim Card Holder

## ➔ Product Catalogue



Flip type 6pin SIM Card  
Holder in Plastic body



Flip type 8pin SIM Card Holder  
in Plastic body



Push type 8pin SIM  
Card holder



Push type 8pin SIM Card holder in  
metal bodyProduct



Flip type 8pin SIM Card  
Holder in metal body

# DAS Antenna, Splitter, Coupler

## ➔ Product Catalogue



**INDOOR CEILING  
OMNI ANTENNA**



**698 ~ 2700 MHz  
Low PIM Slim  
Omni Antenna**



**Flat Omni Antenna**



**3 Way Power Splitter  
698 ~ 2700 MHz**



**2 Way Power Splitter  
698 ~ 2700 MHz**



**4 Way Power Splitter  
698 ~ 2700 MHz**



**5dB Directional Coupler**



**6 dB Directional Coupler**



**7 dB Directional Coupler**



**10 dB Directional Coupler**



**15 dB Directional Coupler**



**20 dB Directional Coupler**



**30 dB Directional  
Coupler**



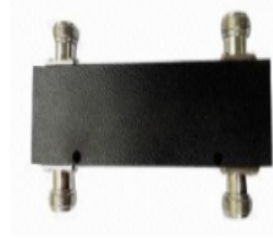
**40 dB Directional Coupler**

## ➔ Product Catalogue

# RF Combiner & Splitter



2 : 1 Combiner



2 : 2 Combiner



4 : 4 Combiner



5G 4 Way RF Power  
Splitter



3 Way Power Splitter 700 ~  
3800 MHz



2 Way Power Splitter  
700 ~ 3800 MHz



698-3800 MHz Cavity 4  
way Power Splitter /  
Power Divider



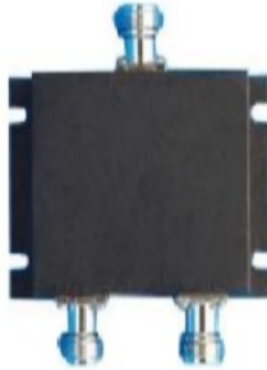
698-3800 MHz Cavity 3  
way Power Splitter /  
Power Divider



698-3800 MHz Cavity 2 way  
Power Splitter / Power  
Divider



# RF Splitter(150-1000 MHz)



**2 Way Power Splitter**  
150~1000 MHz



**3 Way Power Splitter**  
150~1000 MHz



**4 Way Power Splitter**  
150~1000 MHz



**2 WAY POWER SPLITTER**  
(150-1000 MHz)



**4 WAY POWER SPLITTER**  
150-1000 MHz



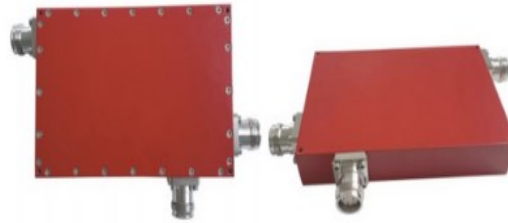
**Directional Coupler**  
150~1000 MHz



**5 dB 150~1000 MHz**

# RF Directional Coupler

## Product Catalogue



**138-960MHz Rf Directional Coupler**



**350-3800MHz 30dB Stripline Directional Coupler**



**380-3800MHz N Female RF Directional Coupler**



**550 To 3800MHz 8dB 1200 Watt DAS RF Directional Coupler**



**Low Pim N Female 15dB Directional Coupler**



**5dB 350-2700MHz Directional Coupler**



**550-6000MHz Low PIM 5dB RF Directional Coupler**



**550-6000MHz Low PIM 5dB RF Directional Coupler**



**600 To 4000MHz N Female -165dbc RF Directional Coupler**



**550-6000MHz RF Directional Coupler**



**600-4000MHz 15dB High Frequency Directional Coupler**



**617-3800MHz DAS IBS 4.3-10 Female Air Dielectric RF Directional Coupler**



**N Female 5dB 300Watt 3 Port Directional Coupler**



**698-2700MHz -163 PIM 40dB RF Directional Coupler**



**698-2700MHz DIN Female -163 PIM 40dB RF Directional Coupler**

# Hybrid Combiner

## ➔ Product Catalogue



**3dB 550-6000MHz 2IN  
1OUT Antenna Signal  
Hybrid Combiner**



**100watt 3800MHz  
Broadband Wideband  
RF 3db Hybrid Coupler**



**698 To 3800MHz 4.3-10  
Female 3x3 Hybrid  
Combiner**



**698 To 3800MHz Din  
Female DAS IBS 3db Hybrid  
Combiner**



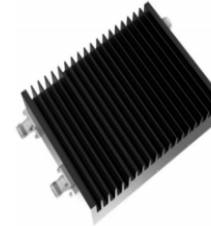
**698-2700MHz 4.3-10  
Female 3db Hybrid  
Coupler**



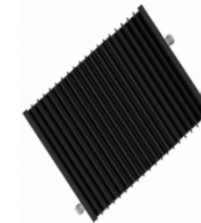
**698-2700MHz DAS Antenna  
Coaxial Hybrid Combiner**



**698-3800MHz N Female  
-160dbc 4x4 Hybrid Combiner**



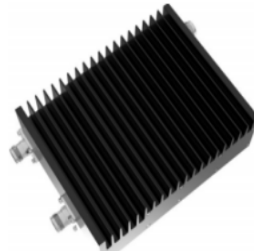
**698-3800MHz Wide Band  
Din Female -153dbc Rf  
Combiner**



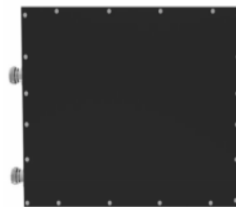
**Dielectric 3db Hybrid  
Black 4000MHz Coax Das  
Combiner**



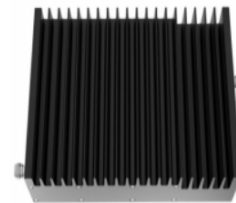
**698-3800MHz Hybrid  
Coupler Combiner**



**Low PIM 2IN 1OUT RF  
Signals 3db Hybrid  
Combiner**



**High Power  
Quadrature 3db Hybrid  
Combiner Coupler**



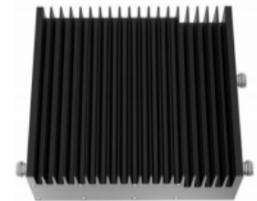
**N Type Female  
Connector Coaxial  
Signal Combiner**



**4 In 4 Out 698-  
3800MHz 50 Ohm  
Combiner**



**N Female -130dbc  
698 To 2700MHz  
Hybrid Combiner**

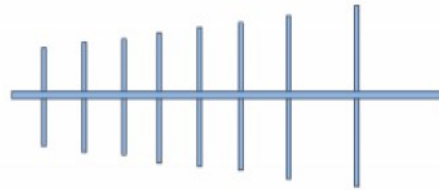


**ROHS 100W Distributed  
Antenna 3db Hybrid  
Combiner**

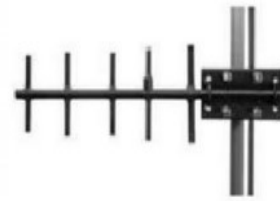


# UHF Antenna & H.V. Connector/Adaptor

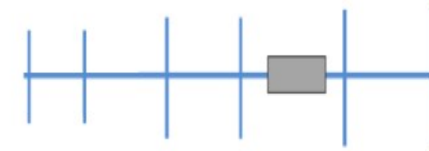
## ➔ Product Catalogue



Model No. SRFS 350 /  
Frequency: 328 ~ 367 MHz  
/Elements: 8



9 dBi YAGI ANTENNA  
400 ~480 MHz



9 dBi YAGI ANTENNA  
88 ~ 108 MHz



LOG PERIODIC DIPOLE  
ANTENNA 150-500MHz



SHV Male Clamp for  
RG 58



MHV Female Female  
Female T Adaptor



MHV Female Male  
Female T Adaptor



SHV Female Bulkhead  
Receptacle Front Mount

# Dummy Load Termination

## ➔ Product Catalogue



**1 WATT BNC MALE  
DUMMYLOAD**



**1 WATT N MALE  
DUMMYLOAD**



**1 WATT SMA MALE  
DUMMYLOAD**



**Low PIM 2 Watt BNC  
Dummy  
Termination Load**



**Low PIM 2 Watt N Dummy  
Termination Load**



**Low PIM 2 Watt N  
Dummy Termination  
Load 50 ohm N Male  
Terminator**



**Low PIM 2 Watt N Dummy  
Termination Load 50ohm N  
Male Terminator**



**Low PIM 5 Watt DIN  
Dummy Termination  
Load 50 ohm DIN mal**



**Low PIM 5 Watt N Dummy  
Termination Load 50 ohm N  
Female Terminator**



**Low PIM 5 Watt N Dummy  
Termination Load 50 ohm N  
male Terminator**



**Low PIM 5 Watt SMA  
Dummy Termination  
Load 50 ohm SMA Male  
Terminator**



**Low PIM 10 Watt N Dummy  
Termination Load 50 ohm N  
male Terminator**



**Low PIM 20 Watt N Dummy  
Termination Load 50 ohm N  
male Terminator**



**Low PIM 50 Watt DIN  
Dummy Termination  
Load 50 ohm DIN Female**



**Low PIM 50 Watt DIN Dummy  
Termination Load 50 ohm DIN Male  
Terminator**

# Dummy Load Termination

## ➔ Product Catalogue



**Low PIM 50 Watt N Dummy  
Termination Load 50 ohm N  
Female Terminator**



**Low PIM 50 Watt N Dummy  
Termination Load 50 ohm N  
Male Terminator**



**Low PIM 100 Watt DIN  
Dummy Termination Load  
50 ohm DIN Female**



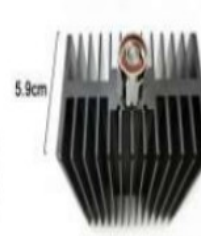
**Low PIM 100 Watt DIN  
Dummy Termination  
Load 50 ohm DIN Male**



**Low PIM 50 Watt N Dummy  
Termination Load 50 ohm N  
Female Terminator**



**Low PIM 100 Watt N Dummy  
Termination Load 50ohm N Male  
Terminator**



**Low PIM 100 Watt SMA  
Dummy Termination Load  
50 ohm SMA Male**



**SMA-2-watt-18-ghz-  
dummyload**



# RF Attenuator

## ➔ Product Catalogue



**N 6GHz 2Watt Attenuator 1dB**



**N 6GHz 2Watt Attenuator 2dB**



**N 6GHz 2Watt Attenuator 5dB**



**N 6GHz 2Watt Attenuator 10dB**



**N 6GHz 2Watt Attenuator 20 dB**



**N Attenuator 6ghz 1db 5Watts**



**N Attenuator 6GHz 30db 2 Watts**



**N Attenuator 6ghz 20db 5 Watts**



**N-Attenuator-50-Watts-3GHz-20dB**



**N Attenuator 100 Watts 4GHz 40dB**



**N Attenuator 100 Watts 4GHz 20dB**



**N Attenuator 50 Watts 3GHz 40dB**



**N Attenuator 100 Watts 4GHz 10dB**



**N Attenuator 50 Watts 3GHz 20dB**



**N Attenuator 50 Watts 3GHz 6dB**



**N Attenuator 50 Watts 3GHz 10dB**



**N Attenuator 50 Watts 3GHz 3dB**



**N Attenuator 25 Watts 4GHz 40 dB**

# RF Attenuator

## Product Catalogue



N Attenuator 25 Watts 4GHz 20 dB



N Attenuator 25 Watts  
4GHz 10 dB



N Attenuator 25  
Watts 4GHz 6dB



N Attenuator 25  
Watts 4GHz 3dB



N Attenuator 10 Watts  
3GHz 40dB



N Attenuator 10 Watts  
3GHz 30dB



N Attenuator 10 Watts 3GHz  
10dB



N Attenuator 10  
Watts 3GHz 6dB



SMA Attenuator 2 Watts  
3GHz 1dB



SMA Attenuator 2  
Watts 3GHz 3dB



SMA Attenuator 2 Watts  
3GHz 6dB



SMAAttenuator 10  
Watts 6GHz 10dB



SMAAttenuator 5  
Watts 6GHz 1dB



SMAAttenuator 10  
Watts 6GHz 1dB



SMAAttenuator 10  
Watts 6GHz 3dB

# Solar Products

## ➔ Product Catalogue



MC4 SOLAR CONNECTOR



MC4 PANEL CONNECTOR



MC4 T BRANCH SOLAR CONNECTOR



MC3 CONNECTOR



MC4 FUSE CONNECTOR



MC4 DIODE CONNECTOR



MC4 Y SOLAR CONNECTOR



3 in 1 SOLAR CABLE



5 in 1 SOLAR CABLE



SOLAR CABLE POLYCAB MAKE



4 SQ MM SOLAR CABLE



6 SQ MM SOLAR CABLE



CLAMP METER



CLAMP METER  
(MASS TECH MAKE)



# Waveguide Component

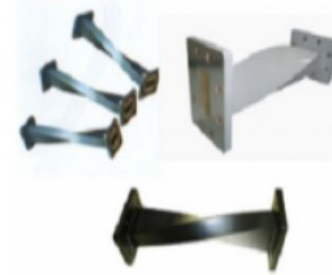
## ➔ Product Catalogue



WR10 STRAIGHT  
WAVEGUIDE



Straight Waveguide  
Waveguide to Coaxial  
Adapter End Launch



Waveguide Twist



Waveguide Bend



Waveguide to Coaxial  
Adapter RA



Magic Hybrid Tee



WG High-pass Filter



WG Cable Assembly  
(Right Angle)



WG Cable Assembly  
(End Launch)



Double Ridge  
WG Bend



Double Ridge WG to  
Coaxial Adapter  
(Right Angle)

# Waveguide Component

## → Product Catalogue



Double Ridge WG to  
Coaxial Adapter (End  
Launch)



High Power Double-  
Ridged WG to Coaxial  
Adapter



Circular WG to  
Coaxial Adapter



WG Bandpass  
Filter



WG Low-pass  
Filter



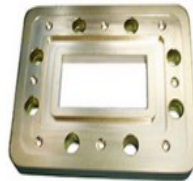
Double Ridge WG  
Loop Coupler



Double Ridge WG  
Broadwall  
Directional Coupler



WG Duplexer



WG Pressure  
Window



Rectangular to  
Rectangular WG Adapter  
Specials



Double Ridge  
Straight WG



Inflatable  
Straight WG



WG Narrow Side  
Directional Coupler



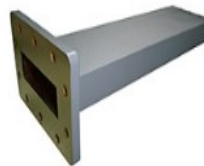
Rectangle WG  
Probe Coupler



Double Ridge  
Twist WG



Small Size WG  
Termination



WG Unmatched  
Termination



Double Ridge WG  
Termination



WG Short  
Plate



WG Offset  
Short



Rectangular WG  
Loop Coupler

# Tools & Accessories

## ➔ Product Catalogue

