

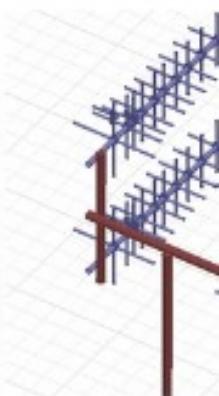
SRFS TELEINFRA

► Plot no 10 Shiv Vihar A Block Najafgarh Nala Road Vikasnagar Uttam Nagar New Delhi-110059

► Phone: +91-9027232570/+91-8800726650

► Email: info@srfsteleinfra.in , info@srfsteleinfra.com

► Website: www.srfsteleinfra.in



Company Introduction

SFRS TELEINFRA was set-up in 2019. However, the management team and other team members have a history in RF industry from the year 1995. In the year 2019, the team and assets were set-up into the new entity under the name of: SRFS TELEINFRA.

1995: Started supply of RF Connector, RF Cable, RF Adaptor, Antenna to Indian/Overseas market from the previous organization.

2000: started Supply of IBS and BTS Components to Indian/Overseas market from the previous organization.

2005: Started in building Solutions , including RF Survey , Design, implementation, drive test and optimization.

2010: started supply in DRDO,ISRO, TBRL, BEL,ITI ,Limited with previous organization

2012: Spun-off into a separate entity: Signity RF Solutions to focus on Hi-Rel type Interconnects with full dedication and vision for meeting the high quality and high reliability standards of our military and aerospace customers.

2014 : started supply of RF & MW components in middle east and european market.

2017: Introduced innovative mixed signal RF+Electrical Harnesses in MIL-24308 and MIL-38999 versions. A single Harness can include multiple signals like Fiber, RF, Ethernet or and/or Electrical

2019: Start a new organization with state of art facility in new delhi for antenna and cable assembly, manufacturing , we believe in "Make in India" and it is our endeavor to support this campaign by contributing our little bit.

2020: At pandemic situation our R&D team developed a system For Indian Army to block IED Communication , anti drone gun with using our high-quality antenna and counter surveillance technique

HLF Cable

➔ Product Catalogue



Low Loss Flexible HLF 100 Coaxial Cable



Low Loss Flexible HLF 195 Coaxial Cable



Low Loss Flexible HLF 240 Coaxial Cable



Low Loss Flexible HLF 400 Coaxial Cable



Low Loss Flexible HLF 900 Coaxial Cable



Low Loss Flexible HLF 500 Coaxial Cable



Low Loss Flexible HLF 600 Coaxial Cable

RG Cable

➔ Product Catalogue



RG 142 Cable



RG 174 Cable



RG 174 Cable



RG 188 Cable



RG 213 Cable



RG 217 Cable



RG 223 Cable



RG 6 CABLE DS



RG 58 CABLE



RG 59 CABLE



RG 179 CABLE



RG 316 CABLE



RG 316 CABLE DS (DOUBLE SHIELDED)



RG 400 CABLE DS



1.13 mm Low Loss Co-axial Cable

Feeder Cable

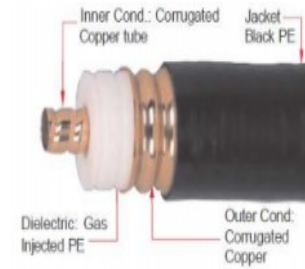
Product Catalogue



1/2" Hansen Feeder Cable



7/8" Hansen Feeder Cable



1-5/8" Hansen Feeder Cable



1/2" Super Flex Cable



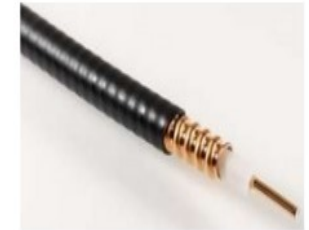
1/4" Feeder Cable



1-1/4" Feeder Cable



1-5/8" Super Flex



1/4" Super Flex



7/8" Super Flex Feeder Cable



7/8" Feeder Cable (Aluminum)

SUCO Semi Rigid & Semi Flexible Cable

Product Catalogue



SMA Connector

Product Catalogue



SMA Female Bulkhead
Right Angle Connector
For P.C.B



SMA Male Crimp
Connector For LMR300
Cable



SMA Male Crimp
Connector For
LMR400 Cable



SMA-Male-right-
angle-crimp-
connector-for-rg-316



SMA Female
Bulkhead Crimp
Connector



SMA Male RA for RG316 /
174 / LMR 100 Crimp
Connector



SMA Female Crimp For
RG58 / LMR 200 CABLE



SMA Female 4H (12.75sq.)
Flange Solder Pot



SMA Female 4 Hole for
RG141 SUCO



SMA Female RA for LMR
200/RG 58 Crimp Connector



SMA Female RA for RG
316/Rg174 Crimp Connector



SMA Male RA for RG58/LMR
200 Crimp Connector



SMA Male RA RP LMR
200/RG 58 Crimp



SMA Male RP for RG 58 /
LMR 200 Crimp Connector



SMA Female Straight
PCB Mount Connector



SMA Female End
Launch 1.6T



SMA Female RA
Connector for P.C.B
Mount



SMA Female Edge
Mount Connector



SMA Male Crimp
Connector For LMR200
Cable



SMA MALE FOR LMR
100, RG 316
CONNECTOR

BNC Connector

➔ Product Catalogue



**BNC FEMALE
BULKHEAD FOR RG 58**



**BNC MALE
STRAIGHT FOR RG
58**



**BNC(F) Bulkhead
Crimp RG316**



**BNC(F) Bulkhead
RG58, RG223,
LMR200**



**BNC(F) Clamp
RG58, RG223,
LMR200**



**BNC(M)
STRAIGHT SF141,
SR141, RG402**



BNC(F) RG316



BNC(F) RG59



**BNC(M) CLAMP RG58,
RG223, LMR200**



**BNC(M) CLAMP
RG316**



**BNC(M) RA RG58,
RG223, LMR200**



**BNC(M) STRAIGHT
SF085, SR085,
RG405**

N Connector

Product Catalogue



N Male Connector for 7/8" Feeder Cable



N Female Connector for 7/8" Feeder Cable



N Female Clamp Connector for 1/2" Foam Feeder Flexible



N Male Clamp Connector for LMR400 Cable



N Female 4H (25 Sq.) Flange Solder Pot



N Female Crimp Connector For LMR200 Cable



N Female for 1/4" LDF Connector



N Female for 1/4" SF Connector



N Female 4 Hole LMR 200 Crimp Connector



N Female 4 Hole for RG 316 / RG 174 / LMR 100 Crimp Connector



N Female 17.5mm SQ Flange Connector



N Male Crimp Connector For LMR200 Cable



N Female RG 213 Clamp Connector



N Female 7/8" Feeder Connector



N Female Crimp Connector for LMR 240



N Female for 1-5/8" LDF Connector



N Male Connector for 1-5/8" Feeder Cable

N Connector

➔ Product Catalogue



N Male 1/4" Super Flex Connector



N Female R/A Crimp Connector for LMR 400



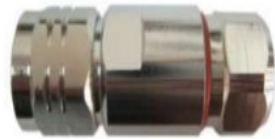
N Female for RG 213 Crimp Connector



N Female for LMR 300 Crimp Connector



N Male 1/4" Feeder Connector



N Male 1/2" Super Flex Connector



N Male for LMR 300 Clamp Connector



N Male for LMR 300 Crimp Connector



N Male Crimp Connector for LMR 400



N Male LMR 240 Clamp Connector



N Male LMR 200 Crimp



N Male R/A for RG316, RG174, RG179, LMR 100 CRIMP



N Male R/A 1/4" Super Flex Connector



N Male R/A 1/2" Super Flex Connector



N Male R/A for LMR 400 Crimp Connector



N Male RA CLAMP CONNECTOR FOR LMR 400



N Male R/A for LMR 200 Crimp Connector

DIN Connector

Product Catalogue



7/16 DIN Male Right Angle Crimp Connector For LMR200 Cable



7/16 Din Male 4H (32mm) Flange Solder Pot



DIN Male Connector for 7/8" Cable



7/16 DIN Female Connector For 1/2" Foam Feeder (Flexible) Cable



7/16 DIN Female Connector for 1/2" Super Flex Cable



7/16 DIN Female Connector for 1/4" SF Cable



7/16 DIN Female LMR 400 Crimp Connector



7/16 DIN Female Straight Connector for 1-1/4" Feeder Cable



7/16 DIN Female Connector for 1-5/8" Feeder Cable



7/16 DIN Female Straight Connector for 7/8" Feeder Cable



7/16 DIN Female Straight Connector for 7/8" SF Feeder Cable



7/16 DIN Male Connector for 1/2" Super Flex Coaxial Cable



7/16 DIN Male Connector for 3/8" Feeder Cable



7/16 DIN Male Connector for 7/8" Super Flex Cable



7/16 DIN Male Crimp Connector for LMR 240



7/16 DIN M Crimp Connector for LMR 400

DIN Connector

➔ Product Catalogue



**7/16 DIN Male LMR 200
Crimp Connector**



**7/16 DIN Male RA Connector
for 1/2" Super Flex Cable**



**7/16 DIN M RA for LMR 400
Crimp Connector**



**7/16 DIN Male Clamp
Connector For 1/2" Foam
Feeder (Flexible) Cable**



**7/16 DIN Male Straight
Connector for 1-5/8" Feeder
Cable**



**7/16 DIN Male Straight
Connector for 1-1/4"
Feeder Cable**



**7/16 DIN Male RA
Connector for 3/8" SF
Feeder Cable**

MCX & MMCX Connector

Product Catalogue



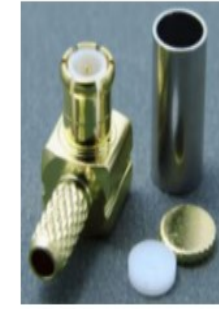
MCX Female Straight Connector For PCB Mount



MMCX Female Straight Connector For P.C.B Mount



MMCX Male Crimp Connector For RG316 Cable /RG174/RG188/LMR100



MCX Male Right Angle Crimp Connector RG316 /RG174/RG188/LMR100



MMCX Male for RG178



MMCX Male Right Angle for RG174, RG316



MCX Female BH Receptable



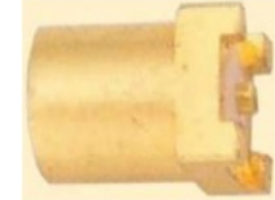
MCX Female End Launch 1.6T



MCX Female PCB 4R



MCX Female RA PCB



MMCX Female PCB SMT



MMCX Male RG174, RG316



MMCX Female For RG178



MMCX Female For RG316, RG174



MMCX Female Straight SF047, SR047



MMCX Male End Launch



MMCX Male Right Angle RG178

SAA & SMB Connector

➔ Product Catalogue



**SAA FEMALE 2 HOLE
CONNECTOR**



**SAA FEMALE 4 HOLE
CONNECTOR**



**SAA FEMALE BT-
3002 Crimp**



**SAA FEMALE B/H RG-
141 Crimp**



**1.0/2.3 (SAA) FEMALE
EDGE LAUNCH PCB**



**1.0/2.3 (SAA) MALE R/A
CRIMP CONNECTOR FOR
RG174/RG316/LMR 100**



**1.0/2.3 (SAA) MALE CRIMP
CONNECTOR FOR RG 179
DOUBLE BRAIDED**



**1.0/2.3 (SAA) MALE
CRIMP CONNECTOR
FOR RG 58**



**1.0/2.3 (SAA) FEMALE
BULKHEAD R/A PCB**



**SAA FEMALE PCB
MOUNT**



**1.0/2.3 (SAA) MALE
CRIMP CONNECTOR
FOR RG 240**



**1.0/2.3 (SAA) MALE
CRIMP CONNECTOR
FOR RG 316**



**SMB MALE STRAIGHT
CONNECTOR FOR RG
174 , RG 316**



**SMB MALE R/A PCB
CONNECTOR**



**SMB MALE R/A 2
HOLE RG 316
CONNECTOR**



**SMB MALE PCB
CONNECTOR**



**SMB MALE B/H
CONNECTOR FOR RG 174,
RG 316**



**SMB FEMALE R/A
PCB CONNECTOR**



**SMB FEMALE R/A
RG 174, RG 316
CONNECTOR**

TNC Connector

Product Catalogue



**TNC Female 4H (17.5 Sq.)
Flange Solder Pot**



**RP TNC FEMALE BULKHEAD
CRIMP CONNECTOR**



**RP TNC FEMALE CRIMP
CONNECTOR FOR RG
58, RG141 & LMR 195**



**TNC FEMALE BH RG58,
RG223, RG400, LMR200**



**TNC MALE CLAMP
CONNECTOR FOR LMR
400**



**TNC MALE CRIMP
CONNECTOR FOR
LMR 400**



**TNC MALE CRIMP
CONNECTOR FOR RG 58,
RG 141 & LMR 195**



**TNC MALE FOR
RG58, RG223, LMR
200**



**TNC MALE FOR
RG316, RG174**



**TNC MALE R/A FOR
RG58, RG223, LMR 200**



**TNC MALE R/A FOR
RG316, RG174**

EIA Flange Connector

➔ Product Catalogue



**1-5/8" EIA FLANGE CONNECTOR FOR
7/8" FOAM FEEDER CABLE**



**7/8" EIA FLANGE
CONNECTOR FOR 1/2"
FEEDER CABLE**



**1-5/8" EIA FLANGE R/A
CONNECTOR FOR 1-5/8"**



**7/8" EIA FLANGE CONNECTOR
FOR 1-5/8" FOAM FEEDER CABLE**



**7/8" EIA FLANGE CONNECTOR
FOR 1/2" SUPER FLEXIBLE
CABLE**



**7/8" EIA FLANGE CONNECTOR
FOR 7/8" FOAM FEEDER CABLE**

FME Connector

➔ Product Catalogue



**FME FEMALE CRIMP
CONNECTOR FOR LMR 195**



**FME FEMALE CRIMP
CONNECTOR FOR LMR 240**



**FME FEMALE CRIMP CONNECTOR
FOR RG 58**



**FME FEMALE CRIMP
CONNECTOR FOR RG 174 &
LMR 100**



**FME MALE CRIMP
CONNECTOR FOR LMR
195**



**FME MALE CRIMP
CONNECTOR FOR
RG 174 & LMR 100**



**FME MALE CRIMP
CONNECTOR FOR RG 58**



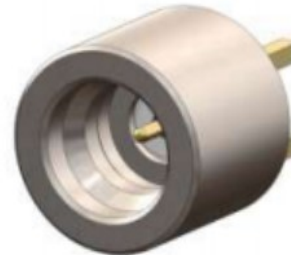
**FME MALE CRIMP
CONNECTOR FOR
LMR 240**

SMP Connector

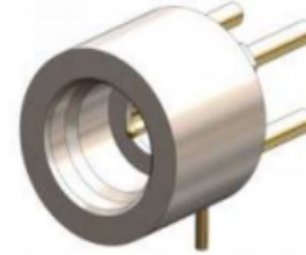
➔ Product Catalogue



**SMP FEMALE R/A FOR
.086 CABLE**



**SMP MALE PCB MOUNT
(4 LEG, STRAIGHT
CONTACT)**



**SMP MALE R/A PCB MOUNT
(4 LEG, R/A CONTACT)**



**SMP R/A FEMALE FOR
RG 178, RG 316 CABLE**



**SMP STRAIGHT FEMALE FOR
.047, .085(SNAP IN PANEL,
FLOAT MOUNT)**



**SMP STRAIGHT MALE PCB
EDGE MOUNT**



**SMP STRAIGHT MALE 2 HOLE
FLANGE MOUNT**



**SMP STRAIGHT FEMALE
CONNECTOR FOR RG 178, RG 316
CABLE**

BMA & SMZ Connector

Product Catalogue



**BMA FEMALE EDGE
LAUNCH CONNECTOR**



**BMA MALE FLANGE MOUNT 4
HOLE CONNECTOR**



**BMA MALE BULKHEAD
CONNECTOR FOR .085
CABLE**



**BMA MALE PCB THRU-
HOLE CONNECTOR R/A**



**BMA MALE PCB THRU-
HOLE CONNECTOR**



**BMA MALE FLANGE MOUNT
2 HOLE FOR .085 CABLE**



**SMZ FEMALE SOLDER CRIMP
CONNECTOR FOR BT-3002 CABLE**



SMZ FEMALE R/A PCB



**SMZ FEMALE R/A CRIMP
CONNECTOR FOR BT-3002
CABLE**



**SMZ FEMALE CRIMP FOR
RG174, RG316, LMR100**



**SMZ FEMALE CRIMP
CONNECTOR FOR RG59**



**SMZ FEMALE CRIMP CONNECTOR
FOR BT-3002 CABLE**

F , UHF & Mini UHF Connector

Product Catalogue



UHF FEMALE 4-HOLE
CRIMP CONNECTOR FOR
RG 58/141/142



UHF FEMALE CRIMP
CONNECTOR FOR LMR
240



UHF FEMALE CRIMP
CONNECTOR FOR
LMR 400



UHF FEMALE
STRAIGHT PANEL
MOUNT SOLDER



UHF MALE CRIMP
CONNECTOR FOR LMR
240



F MALE CRIMP
CONNECTOR FOR
RG58, LMR 195



UHF MALE CRIMP
CONNECTOR FOR LMR
400



UHF FEMALE CRIMP
CONNECTOR FOR LMR 600



UHF MALE CRIMP
CONNECTOR FOR RG58 /
141 / 142, LMR 195



MINI-UHF MALE
CRIMP CONNECTOR
LMR 240



MINI-UHF MALE CRIMP
CONNECTOR FOR RG
58/141/142, LMR 195



F FEMALE CRIMP
CONNECTOR FOR
RG58, LMR 195

GSM Antenna

Product Catalogue



2 dBi GSM Rubber Duck Antenna with SMA Male RA



2 dBi GSM Rubber-Duck Antenna with SMA Male



3 dBi GSM Rubber Duck Antenna with SMA Male Movable



3 dBi GSM Rubber-Duck Antenna with SMA Male RA



3 dBi GSM Rubber-Duck Antenna with SMA Male



5 dBi GSM Rubber-Duck Antenna with SMA Male Movable



Quad Band GSM 9dBi Rubber-Duck Antenna with SMA Male Movable



800-2700MHz 3 dBi Magnetic Mount Antenna with SMA RG 174 Cable



3 dBi Magnetic Base Rubber Duck Antenna



6-dBi-GSM-Magnetic-Antenna-Spring-Typ



9 dBi Magnetic Base Rubber Duck Antenna



GSM STICKER ANTENNA 900 / 1800 MHz

GPS Antenna

Product Catalogue



28 dBi External GPS Magnetic Antenna with SMA (M)



28 dBi External GPS Magnetic Antenna with SMA (M) RA



GPS Internal Antenna (15mm*
15mm*6.5mm)
Model No.SRFS-IGPS28C-60



38 dBi GPS Marine Antenna



GPS Internal Antenna (25mm*25mm)



28 dBi External GPS Magnetic Antenna with MCX RA Connector



28 dBi External GPS Magnetic Antenna with Fakra Connector

Combo & Wi-Fi Antenna

➔ Product Catalogue



GPS/GSM COMBO ANTENNA



GPS/GSM COMBO ANTENNA



2.4 GHz 2 dBi Rubber Duck Antenna



2.4 GHz 3 dBi Rubber Duck Antenna



2.4 GHz 5 dBi Rubber Duck Antenna RP-SMA Male Connector



2.4 GHz 9 dBi SMA-Male High Performance "Rubber Duck" Wireless LAN Antenna



2.4 GHz Wi-Fi 5dBi Rubber Duck SMA (M) movable body



9 dBi RFID Rubber-Duck Antenna with SMA Male Movable



800-2700MHz 6 dBi Magnetic Mount Antenna with SMA RG 174 Cable

3G-4G, All Band (800 – 2500 MHz) Antenna

Product Catalogue



6 dBi Magnetic Base Rubber Duck Antenna



2.4 GHz 5 dBi Rubber Duck Antenna RP-SMA Male Connector



698-960/1710-2700MHz 3dBi Omni Ceiling Antenna



DIRECTIONAL YAGI ANTENNA - 18 dBi



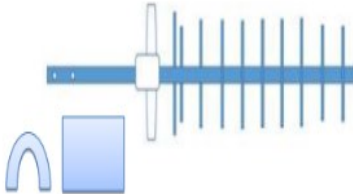
SOLID ELEMENT DIRECTIONAL YAGI ANTENNA - 21 dBi



2.4 GHz Wi-Fi 5dBi Rubber Duck SMA (M) movable body



DIRECTIONAL YAGI ANTENNA - 12dBi



DIRECTIONAL YAGI ANTENNA - 18 dBi Long Boom



698-2700MHz 12 dBi Patch Panel Antenna with SMA (M) Outdoor



Low Pim In Building Antenna

Product Catalogue



Low PIM Log Periodic Antenna



698-2700MHz Low PIM Log Periodic Antenna



698-4000MHz Low PIM Slim Omni Antenna



698-2700MHz Low PIM Indoor Panel Antenna



698-2700MHz Low PIM Card Omni Antenna



698-2700MHz Low PIM MIMO Omni Antenna



698-2700MHz Low PIM MIMO Panel Antenna



698-2700MHz Low PIM MIMO Panel Antenna



698-2700MHz Low PIM Slim Omni Antenna



698-4000MHz 3dBi Omni Ceiling Antenna



698-2700MHz Low PIM MIMO Indoor Dome Antenna



698-2700MHz Low PIM Indoor Panel Antenna



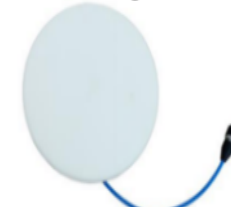
698-2700MHz Low PIM Indoor Omni Antenna



698-2700MHz Low PIM Indoor Dome Antenna



698-960/1710-4000MHz MIMO Ceiling Antenna



698-2700MHz Low PIM Slim Omni Antenna



698-2700MHz Low PIM Card Omni Antenna

RFID, Low Pim In Building Antenna

➔ Product Catalogue



698-2700MHz Low PIM
Indoor Ceiling Antenna



380-6000MHz Low PIM
Indoor Omni Antenna



433 MHz 5 dBi Rubber
Duck Antenna SMA
Male Connector



433 MHz 3 dBi Rubber Duck
Antenna SMA Male Right
Angle Connector



433 MHz 5 dBi Rubber Duck
Antenna SMA Male Connector



9 dBi RFID Rubber-Duck
Antenna with SMA Male
Movable

Repeater Antennas 698 ~ 2700 MHz

Product Catalogue



1710-2700MHz
11dBi MIMO
Panel Antenna



698-960/1710-2700MHz
12dBi MIMO Sector
Antenna



698-960/1710-2700MHz
11dBi Directional
LPDA Antenna



698-960/1710-2700MHz
8/10dBi MIMO Sector
Antenna



698-960/1710-2700MHz
8/10dBi Directional
Sector Antenna



698-960/1710-
2700MHz 7dBi
Outdoor Panel
Antenna



698-960_1710-2700MHz-
7dBi-Indoor-Panel-
Antenna



698-960/1710-2700MHz
7dBi Directional Panel
Antenna



698-960/1710-
2700MHz 3dBi Omni
Ceiling Antenna



698-960/1710-
2700MHz 6-9dBi
MIMO Panel
Antenna



698-960/1710-
2700MHz 6/8dBi
MIMO Panel
Antenna



698-960/1710-
2700MHz 4dBi
Omni directional
Antenna

Repeater Antennas 698 ~ 2700 MHz

Product Catalogue



698-960/1710-2700MHz 4dBi Omni Ceiling Antenna



698-960/1710-2700MHz 4dBi Marine Antenna



698-960/1710-2700MHz 3dBi Patch Antenna



698-960/1710-2700MHz 3dBi Omni Ceiling Antenna



698-960/1710-2700MHz 3dBi Omni Ceiling Antenna



698-960/1710-2700MHz 3.5dBi Omni Antenna



698-960/1710-2700MHz 3dBi MIMO Omni Ceiling Antenna



698-960/1710-2700MHz 3dBi Omni Ceiling Antenna



698-960/1710-2700MHz 3dBi Omni Ceiling Antenna



698-960/1710-2700MHz 2.5/5dBi MIMO Omni Antenna



698-960/1710-2700MHz 5dBi Directional Ceiling Antenna



698-960/1710-2700MHz MIMO Ceiling Antenna

Repeater Antennas 698 ~ 2700 MHz

Product Catalogue



698-960/1710-2700MHz
12dBi MIMO Sector
Antenna



696/960-1710-2700MHz 6dBi
Omnidirectional Antenna



698-2700MHz 12 dBi Patch Panel
Antenna with SMA (M) Outdoor



698-960/1710-2700MHz 4dBi
Omnidirectional Antenna

Magnetic Base Antenna

➔ Product Catalogue



800-2700MHz 6 dBi Magnetic Mount
Antenna with SMA RG 174 Cable



800-2700MHz 6 dBi Magnetic Mount
Antenna with SMA RG 58 Cable



6 dBi Magnetic Base Rubber Duck
Antenna



GPS/GSM COMBO ANTENNA



800-2700MHz 8 dBi Magnetic Mount
Antenna with SMA RG 58 Cable

Yagi Antenna

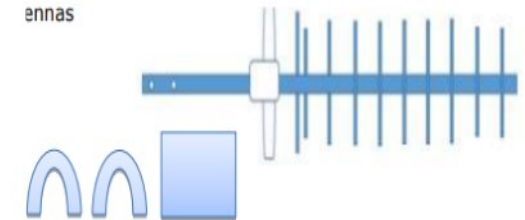
➔ Product Catalogue



DIRECTIONAL YAGI ANTENNA - 12dBi



DIRECTIONAL YAGI ANTENNA - 18 dBi



698-2700MHz 12 dBi Patch Panel Antenna with SMA (M) Outdoor



SOLID ELEMENT DIRECTIONAL YAGI ANTENNA - 21 dBi



698-2700MHz 12 dBi Patch Panel Antenna with SMA (M) Outdoor



Horn Antenna

Product Catalogue



Wideband Dual-ridged Horn Antenna



Antenna bracket for standard gain horn antenna



Ultra Broad wall Dual Linear Polarization Four Ridged Antenna



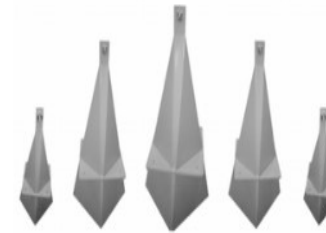
Standard Gain Yagi Antenna-10dB



Conical Horn Antenna



Circular Polarization Standard Horn Antenna



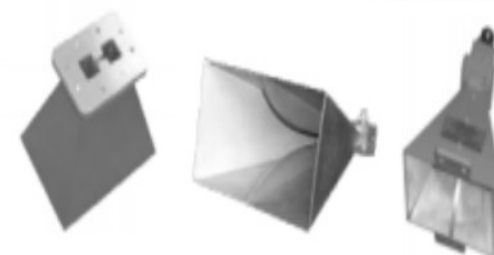
Low side lobe diagonal horn antenna



Wideband Horn Antenna



Mini wideband double ridged antenna



Octave Double Ridged Horn Antenna



Dual Linear Polarization Horn Antenna

Horn Antenna

➔ Product Catalogue



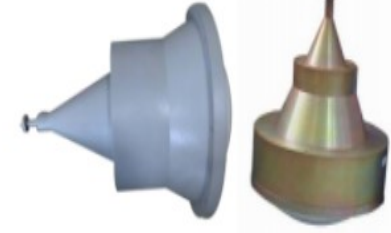
Open Boundary Dual Linear Polarization Four Ridged Antenna



Conical Horn Lens Antenna



Pyramidal Horn Lens Antenna



Point Focusing Horn Lens Antenna



Ladder Membrane type Dual Circular Polarization Horn Antenna



Feed Irradiation Lens Antennas



Corrugated Horn and Multi Mode Horn Antenna



Circular Polarization Horn Antenna



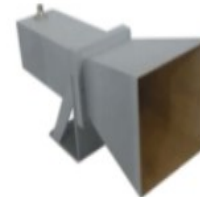
Dual Linear Polarization Horn Antenna



Dual Circular Polarization Horn Antenna



Dual Circular Polarization Horn Antenna



Dual Linear Polarization Orthogonally Horn Antenna



RF Adaptor

Product Catalogue



BNC Female to Female to Female T Adaptor



BNC Female to BNC Female Adaptor



BNC FEMALE TO FEMALE BULKHEAD ADAPTOR



N Male to N Male Adaptor



N Female to N Female Connector Adaptor



N Male to N Female Connector Adaptor



N FFM T type Adaptor



SMA MALE TO SMA MALE ADAPTOR



SMA FEMALE TO SMA FEMALE ADAPTOR



SMA MALE TO SMA FEMALE ADAPTOR



SMA FEMALE TO SMA FEMALE 4 HOLE ADAPTOR



SMA FEMALE TO MALE TO FEMALE ADAPTOR



SMA FEMALE TO FEMALE TO FEMALE ADAPTOR



SMA MALE TO SMA MALE RA ADAPTOR

Sim Card Holder

➔ Product Catalogue



Flip type 6pin SIM Card Holder in Plastic body



Flip type 8pin SIM Card Holder in Plastic body



Push type 8pin SIM Card holder



Push type 8pin SIM Card holder in metal bodyProduct



Flip type 8pin SIM Card Holder in metal body

DAS Antenna, Splitter, Coupler

Product Catalogue



**INDOOR CEILING
OMNI ANTENNA**



**698 ~ 2700 MHz
Low PIM Slim
Omni Antenna**



Flat Omni Antenna



**3 Way Power Splitter
698 ~ 2700 MHz**



**2 Way Power Splitter
698 ~ 2700 MHz**



**4 Way Power Splitter
698 ~ 2700 MHz**



5dB Directional Coupler



6 dB Directional Coupler



7 dB Directional Coupler



10 dB Directional Coupler



15 dB Directional Coupler



20 dB Directional Coupler



**30 dB Directional
Coupler**



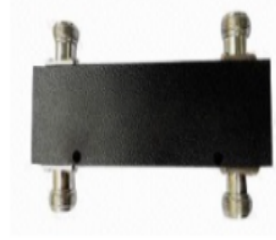
40 dB Directional Coupler

➔ Product Catalogue

RF Combiner & Splitter



2 : 1 Combiner



2 : 2 Combiner



4 : 4 Combiner



5G 4 Way RF Power Splitter



3 Way Power Splitter 700 ~ 3800 MHz



2 Way Power Splitter
700 ~ 3800 MHz



698-3800 MHz Cavity 4
way Power Splitter /
Power Divider

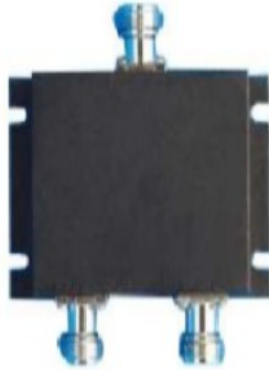


698-3800 MHz Cavity 3
way Power Splitter /
Power Divider



698-3800 MHz Cavity 2 way
Power Splitter / Power
Divider

RF Splitter(150-1000 MHz)



2 Way Power Splitter
150~1000 MHz



3 Way Power Splitter
150~1000 MHz



4 Way Power Splitter
150~1000 MHz



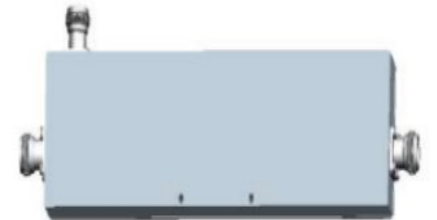
2 WAY POWER SPLITTER
(150-1000 MHz)



4 WAY POWER SPLITTER
150-1000 MHz



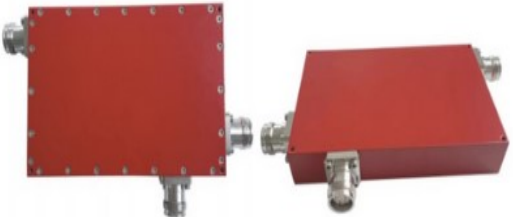
Directional Coupler
150~1000 MHz



5 dB 150~1000 MHz

RF Directional Coupler

Product Catalogue



138-960MHz Rf Directional Coupler



350-3800MHz 30dB Stripline Directional Coupler



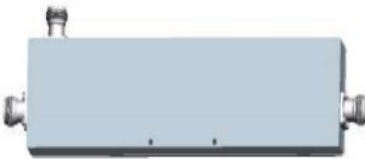
380-3800MHz N Female RF Directional Coupler



550 To 3800MHz 8dB 1200 Watt DAS RF Directional Coupler



Low Pim N Female 15dB Directional Coupler



5dB 350-2700MHz Directional Coupler



550-6000MHz Low PIM 5dB RF Directional Coupler



550-6000MHz Low PIM 5dB RF Directional Coupler



600 To 4000MHz N Female -165dbc RF Directional Coupler



550-6000MHz RF Directional Coupler



600-4000MHz 15dB High Frequency Directional Coupler



617-3800MHz DAS IBS 4.3-10 Female Air Dielectric RF Directional Coupler



N Female 5dB 300Watt 3 Port Directional Coupler



698-2700MHz -163 PIM 40dB RF Directional Coupler



698-2700MHz DIN Female -163 PIM 40dB Directional Coupler

Hybrid Combiner

Product Catalogue



3dB 550-6000MHz 2IN
1OUT Antenna Signal
Hybrid Combiner



100watt 3800MHz
Broadband Wideband
RF 3db Hybrid Coupler



698 To 3800MHz 4.3-10
Female 3x3 Hybrid
Combiner



698 To 3800MHz Din
Female DAS IBS 3db Hybrid
Combiner



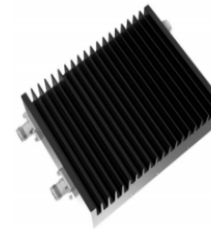
698-2700MHz 4.3-10
Female 3db Hybrid
Coupler



698-2700MHz DAS Antenna
Coaxial Hybrid Combiner



698-3800MHz N Female
-160dbc 4x4 Hybrid Combiner



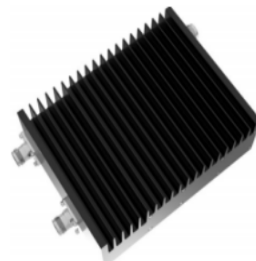
698-3800MHz Wide Band
Din Female -153dbc Rf
Combiner



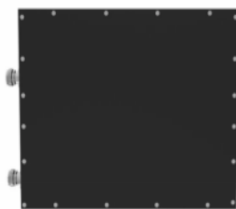
Dielectric 3db Hybrid
Black 4000MHz Coax Das
Combiner



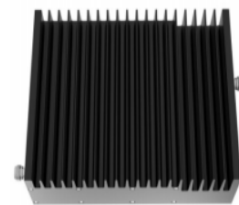
698-3800MHz Hybrid
Coupler Combiner



Low PIM 2IN 1OUT RF
Signals 3db Hybrid
Combiner



High Power
Quadrature 3db Hybrid
Combiner Coupler



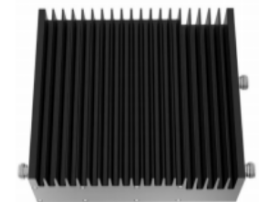
N Type Female
Connector Coaxial
Signal Combiner



4 In 4 Out 698-
3800MHz 50 Ohm
Combiner



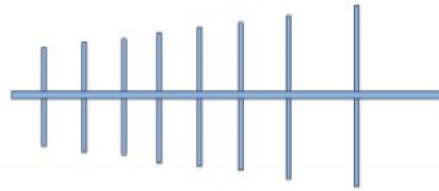
N Female -130dbc
698 To 2700MHz
Hybrid Combiner



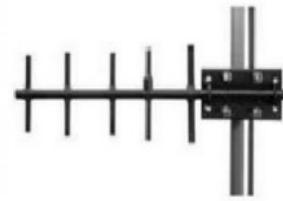
ROHS 100W Distributed
Antenna 3db Hybrid
Combiner

UHF Antenna & H.V. Connector/Adaptor

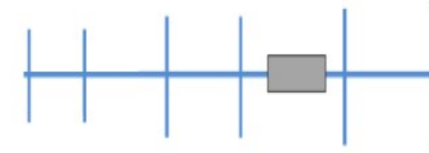
Product Catalogue



Model No. SRFS 350 /
Frequency: 328 ~ 367 MHz
/Elements: 8



9 dBi YAGI ANTENNA
400 ~480 MHz



9 dBi YAGI ANTENNA
88 ~ 108 MHz



LOG PERIODIC DIPOLE
ANTENNA 150-500MHz



SHV Male Clamp for
RG 58



MHV Female Female
Female T Adaptor



MHV Female Male
Female T Adaptor



SHV Female Bulkhead
Receptacle Front Mount

Dummy Load Termination

➔ Product Catalogue



1 WATT BNC MALE
DUMMYLOAD



1 WATT N MALE
DUMMYLOAD



1 WATT SMA MALE
DUMMYLOAD



Low PIM 2 Watt BNC
Dummy
Termination Load



Low PIM 2 Watt N Dummy
Termination Load



Low PIM 2 Watt N
Dummy Termination
Load 50 ohm N Male
Terminator



Low PIM 2 Watt N Dummy
Termination Load 50ohm N
Male Terminator



Low PIM 5 Watt DIN
Dummy Termination
Load 50 ohm DIN mal



Low PIM 5 Watt N Dummy
Termination Load 50 ohm N
Female Terminator



Low PIM 5 Watt N Dummy
Termination Load 50 ohm N
male Terminator



Low PIM 5 Watt SMA
Dummy Termination
Load 50 ohm SMA Male
Terminator



Low PIM 10 Watt N Dummy
Termination Load 50 ohm N
male Terminator



Low PIM 20 Watt N Dummy
Termination Load 50 ohm N
male Terminator



Low PIM 50 Watt DIN
Dummy Termination
Load 50 ohm DIN Female



Low PIM 50 Watt DIN Dummy
Termination Load 50 ohm DIN Male
Terminator



Dummy Load Termination

➔ Product Catalogue



Low PIM 50 Watt N Dummy Termination Load 50 ohm N Female Terminator



Low PIM 50 Watt N Dummy Termination Load 50 ohm N Male Terminator



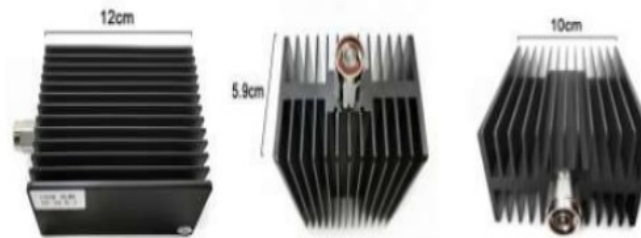
Low PIM 100 Watt DIN Dummy Termination Load 50 ohm DIN Female



Low PIM 100 Watt DIN Dummy Termination Load 50 ohm DIN Male



Low PIM 50 Watt N Dummy Termination Load 50 ohm N Female Terminator



Low PIM 100 Watt N Dummy Termination Load 50ohm N Male Terminator



Low PIM 100 Watt SMA Dummy Termination Load 50 ohm SMA Male



SMA-2-watt-18-ghz-dummyload

RF Attenuator

Product Catalogue



N 6GHz 2Watt Attenuator 1dB



N 6GHz 2Watt Attenuator 2db



N 6GHz 2Watt Attenuator 5dB



N 6GHz 2Watt Attenuator 10dB



N 6GHz 2Watt Attenuator 20 dB



N Attenuator 6ghz 1db 5Watts



N Attenuator 6GHz 30db 2 Watts



N Attenuator 6ghz 20db 5 Watts



N-Attenuator-50-Watts-3GHz-20dB



N Attenuator 100 Watts 4GHz 40dB



N Attenuator 100 Watts 4GHz 20dB



N Attenuator 50 Watts 3GHz 40dB



N Attenuator 100 Watts 4GHz 10dB



N Attenuator 50 Watts 3GHz 20dB



N Attenuator 50 Watts 3GHz 6dB



N Attenuator 50 Watts 3GHz 10dB



N Attenuator 50 Watts 3GHz 3dB



N Attenuator 25 Watts 4GHz 40 dB

RF Attenuator

Product Catalogue



N Attenuator 25 Watts 4GHz 20 dB



N Attenuator 25 Watts 4GHz 10 dB



N Attenuator 25 Watts 4GHz 6dB



N Attenuator 25 Watts 4GHz 3dB



N Attenuator 10 Watts 3GHz 40dB



N Attenuator 10 Watts 3GHz 30dB



N Attenuator 10 Watts 3GHz 10dB



N Attenuator 10 Watts 3GHz 6dB



SMA Attenuator 2 Watts 3GHz 1dB



SMA Attenuator 2 Watts 3GHz 3dB



SMA Attenuator 2 Watts 3GHz 6dB



SMAAttenuator 10 Watts 6GHz 10dB



SMAAttenuator 5 Watts 6GHz 1dB



SMAAttenuator 10 Watts 6GHz 1dB



SMAAttenuator 10 Watts 6GHz 3dB

Solar Products

Product Catalogue



MC4 SOLAR CONNECTOR



MC4 PANEL CONNECTOR



MC4 T BRANCH SOLAR CONNECTOR



MC3 CONNECTOR



MC4 FUSE CONNECTOR



MC4 DIODE CONNECTOR



MC4 Y SOLAR CONNECTOR



3 in 1 SOLAR CABLE



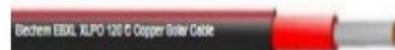
5 in 1 SOLAR CABLE



SOLAR CABLE POLYCAB MAKE



4 SQ MM SOLAR CABLE



6 SQ MM SOLAR CABLE



CLAMP METER



CLAMP METER
(MASS TECH MAKE)

Waveguide Component

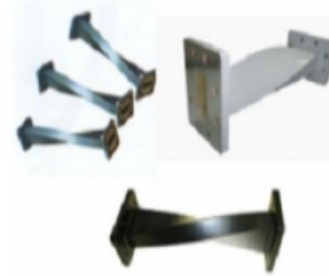
➔ Product Catalogue



**WR10 STRAIGHT
WAVEGUIDE**



**Straight Waveguide
Waveguide to Coaxial
Adapter End Launch**



Waveguide Twist



Waveguide Bend



**Waveguide to Coaxial
Adapter RA**



Magic Hybrid Tee



WG High-pass Filter



**WG Cable Assembly
(Right Angle)**



**WG Cable Assembly
(End Launch)**



**Double Ridge
WG Bend**



**Double Ridge WG to
Coaxial Adapter
(Right Angle)**

Waveguide Component

Product Catalogue



Double Ridge WG to Coaxial Adapter (End Launch)



High Power Double-Ridged WG to Coaxial Adapter



Circular WG to Coaxial Adapter



WG Bandpass Filter



WG Low-pass Filter



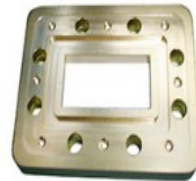
Double Ridge WG Loop Coupler



Double Ridge WG Broadwall Directional Coupler



WG Duplexer



WG Pressure Window



Rectangular to Rectangular WG Adapter Specials



Double Ridge Straight WG



Inflatable Straight WG



WG Narrow Side Directional Coupler



Rectangle WG Probe Coupler



Double Ridge Twist WG



Small Size WG Termination



WG Unmatched Termination



Double Ridge WG Termination



WG Short Plate



WG Offset Short



Rectangular WG Loop Coupler

Tools & Accessories

➔ Product Catalogue

