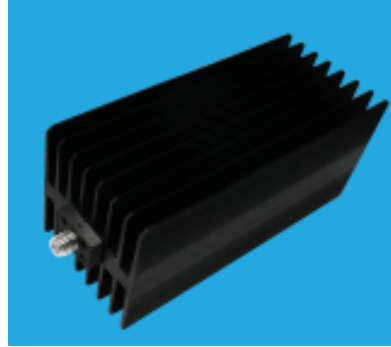


SRFS TELEINFRA



N male to N Female SRFS18K5 DC~18GHz,500W



Features:

- * Low VSWR
- * High Attenuation Flatness

Electrical Specifications	
Frequency	DC~18GHz
Attenuation	3,10~60dB
Impedance	50Ω
Average Power	500W@25°C max.
RF Connectors	N Male to N Female
Dielectric	PEI
Tolerance	±2mm [±0.08in]
Environmental Specifications	
Operating Temperature	-55° to + 125°C

Attenuation Accuracy and VSWR

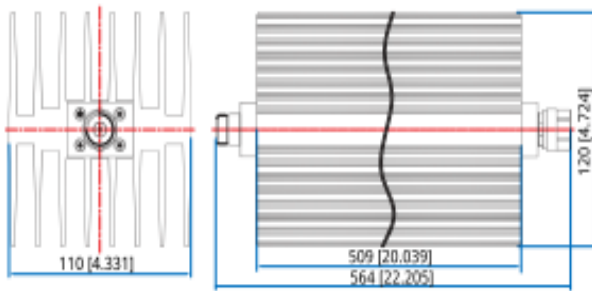
Frequency (GHz)	Attenuation Accuracy (±dB) vs. Attenuation (dB)							VSWR (max.)
	3	10	20	30	40	50	60	
DC~3	- 0.6/+1.5	-	-	-	-	-	-	1.25
DC~4	+2.3	-0.6/+1.5	1.2	1.0	1.0	1.0	1.0	1.25
DC~8	+3.5	-0.5/+2.0	2.0	1.5	1.1	1.1	1.1	1.30
DC~12.4	-	3.0	2.0	-1.5/+2.0	1.2	1.2	1.2	1.35
DC~18	-	6.0	5.0	0/+6.0	1.5	1.5	1.5	1.5



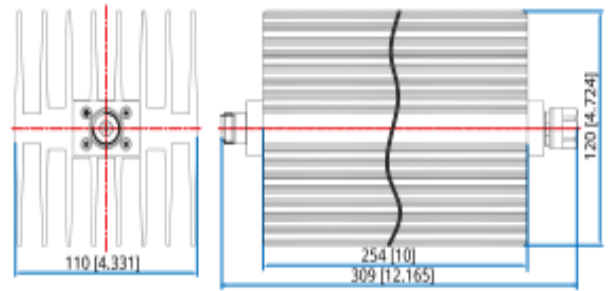
Plot no 10 Shiv Vihar A Block Najafgarh Nala Road Vikasnagar Uttam Nagar New Delhi-110059

+91-9027232570, +91-8800726650 info@srfsteleinfra.in, info@srfsteleinfra.com

www.srfsteleinfra.in



Outline A



Outline B

