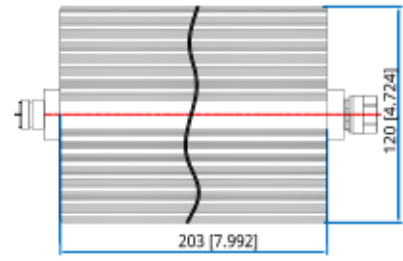
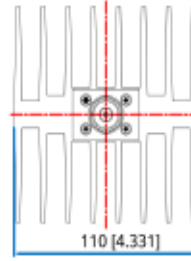
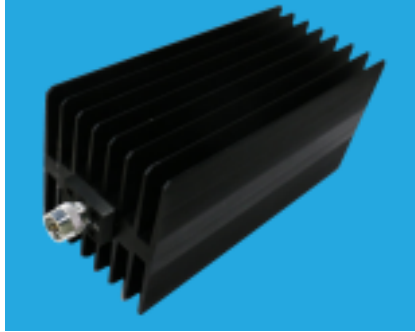


SRFS TELEINFRA

N male to N Female SRFS18K25 DC~18GHz,250W



Features:

- * Low VSWR
- * High Attenuation Flatness

Electrical Specifications	
Frequency	DC~18GHz
Attenuation	10~60dB
Impedance	50Ω
Average Power	250W@25°C max.
RF Connectors	N Male, N Female
Dielectric	PEI
Tolerance	±2mm [±0.08in]
Environmental Specifications	
Operating Temperature	-55° to + 125°

Attenuation Accuracy and VSWR

Frequency (GHz)	Attenuation Accuracy (±dB) vs. Attenuation (dB)				VSWR (max.)
	10-20	21-30	31-40	41-60	
DC~4	0.7	0.8	0.9	0.9	1.2
DC~8	0.8	0.9	0.9	0.9	1.25
DC~12.4	0.9	1.0	1.1	1.1	1.35
DC~18	2.0	1.5	1.3	1.4	1.45



Plot no 10 Shiv Vihar A Block Najafgarh Nala Road Vikasnagar Uttam Nagar New Delhi-110059

+91-9027232570, +91-8800726650 info@srfsteleinfra.in, info@srfsteleinfra.com

www.srfsteleinfra.in