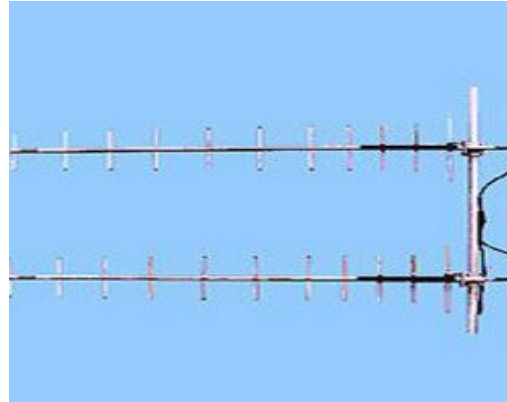


SRFS TELEINFRA



High Gain Dual Stacked Yagi Antenna (300-400 MHz)



Electrical Specifications	
Center Frequency	300 MHz
Gain	16 dBi
Band Width	12 MHz
VSWR	1:1.5
Polarization	Vertical or Horizontal
RF Power Handling Capacity	250 Watts
Front to Back Ratio	18 dB
Beam Width -3dB	50° (Vertical)
Horizontal Beamwidth	25°
Radiation Pattern	Directional
Input Impedance	50 Ω
Lightning Protection	DC Ground
Input Termination	N-Female
Mechanical Specifications	
Antenna Materials	Aluminum
Mounting Hardware- materials	Stainless Steel
Wind Rating	200 Km/Hr
Maximum Mount Pipe Diameter	52mm(2 inches)
Environmental Specifications	
Operating Temperature	-30° to + 70°
Storage Temperature	-40° to + 80°
Humidity	0 to 95% RH



Plot no 10 Shiv Vihar A Block Najafgarh Nala Road Vikasnagar Uttam Nagar New Delhi-110059

+91-9027232570, +91-8800726650 info@srfsteleinfra.in, info@srfsteleinfra.com

www.srfsteleinfra.in