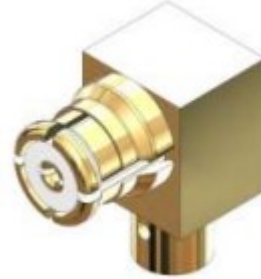
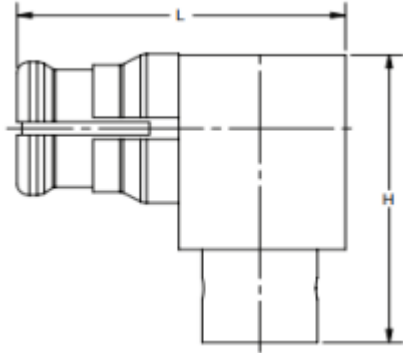


SMP STRAIGHT FEMALE FOR .047, .085(SNAP IN PANEL, FLOAT, MOUNT)



ELECTRICAL&MECHANICAL SPECIFICATIONS		
Characteristics Impedance	50 Ω	
Frequency Range	DC to 40 GHz	
VSWR	1.20:1 max : DC to 18 GHz 1.15:1 max : 23 to 26.5 GHz 1.40:1 max : 26.5 to 40 GHz	
Insertion Loss	0.10 dB x $\sqrt{\text{GHz}}$ dB	
RF leakage (Fully Mated)	-80 dB min. DC to 3 GHz -65 dB min. from 3 to 26.5 GHz	
Voltage Rating	335 Vrms max.at sea level	
Dielectric Withstanding Voltage	500 Vrms max. at sea level	
Insulation Resistance	5000 megohms min.	
Dielectric Resistance	$\geq 5000\text{M}\Omega$	
Contact Resistance	Center Contact $\leq 6\text{m}\Omega$ Outer Contact $\leq 2.0\text{m}\Omega$	
Durability	Mating cycles ≥ 250	
MATERIAL&PLATING		
	Material	Plating
Body	Brass	Au
Insulator	PTFE	-
Center Conductor	Beryllium Copper	Au
ENVIRONMENTAL SPECIFICATIONS		
Temperature Range	- 65°C ~ +165 °C	
RoHS Compliant	Yes	