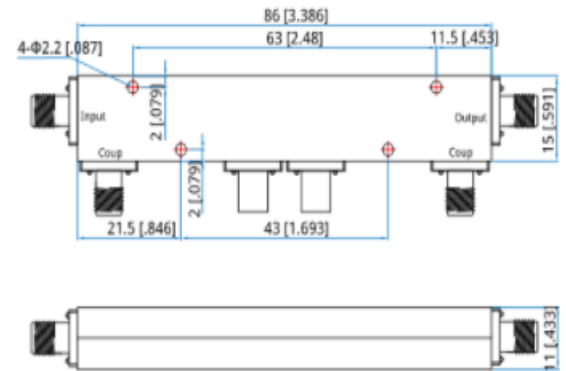


## N Female 35dB 0.3KW 0.1-1 GHz Bi Directional Coupler



### Product Description:

#### N Female 35dB 0.3KW 0.1-1 GHz Bi Directional Coupler

#### 100-1000MHz 0.1-1GHz 35dB 300W N Female BI-Directional Coupler

BI-Directional couplers are a passive device used mostly in the field of radio technology. An essential feature of BI-directional couplers is with all four coupled ports accessible. In this case the two ports can be terminated with 50 ohm loads, and the outer ports can be connected to potentially mismatched loads without affecting the directivity or output at the other coupled port.

Mechanical & Electrical Specifications	
Part Number	SRFS-BDC-0110-300W-ON35
Operating Frequency ( MHz )	100-1000
Impedance ( Ohm )	50
VSWR	≤1.1
Coupling (dB)	35 ± 4
Insertion Loss (dB)	≤0.2
Directivity (dB)	≥57
Application	Indoor/Outdoor
Degree of Protection	IP65
Operating Temperature ( °C )	-40 ~ + 80
Interface	N Female for Input & Output,SMA Female for Coupler Port
Handling Power (Watt, max)	300
Peak Power (Watt, max)	1200
Dimension (mm)(L×W×H, excl connector)	118 × 70× 40
ROHS Compliance	Yes

Plot no 10 Shiv Vihar A Block Najafgarh Nala Road Vikasnagar Uttam Nagar New Delhi-110059

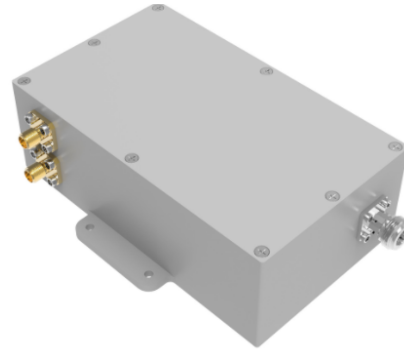
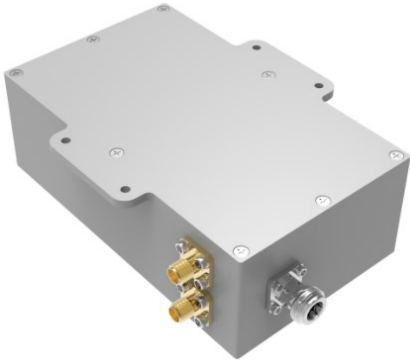
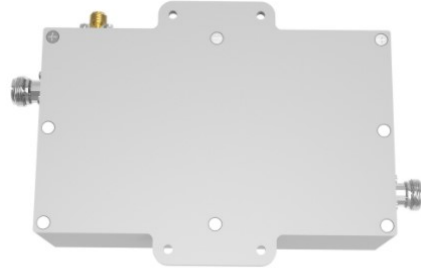
+91-9027232570, +91-8800726650 [info@srfsteleinfra.in](mailto:info@srfsteleinfra.in), [info@srfsteleinfra.com](mailto:info@srfsteleinfra.com)

[www.srfsteleinfra.in](http://www.srfsteleinfra.in)

# SRFS TELEINFRA



## N Female 35dB 0.3KW 0.1-1 GHz Bi Directional Coupler



Plot no 10 Shiv Vihar A Block Najafgarh Nala Road Vikasnagar Uttam Nagar New Delhi-110059

+91-9027232570, +91-8800726650 ✉ [info@srfsteleinfra.in](mailto:info@srfsteleinfra.in), [info@srfsteleinfra.com](mailto:info@srfsteleinfra.com)

🌐 [www.srfsteleinfra.in](http://www.srfsteleinfra.in)