

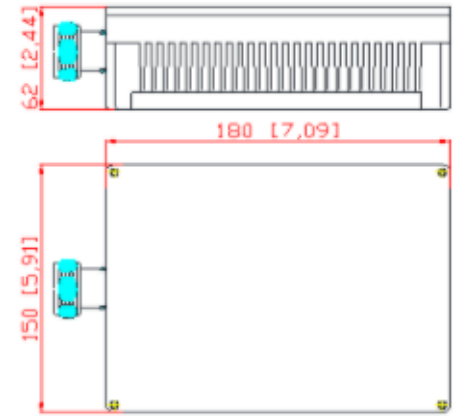
DIN Male 50 Watt 0-4MHz Low PIM Termination

Product Description:

DIN Male 50 Watt 0-4MHz Low PIM Termination

50 Watts 3.8GHZ 4GHZ 6GHZ DIN Male Low PIM -163dbc -165dbc RF Load Termination

Dummy load/Low PIM Termination/Load is a device used to stop some port as a RF power load when testing other RF products or stop the RF power radiation when some port is not used at present , the theory is matching similar impedance to real device that will be connected to the RF System. Dummy load also will absorb some power and getting heating when RFA system works, so when use dummy load to stop some port in the RF system , pay attention to the power handling , otherwise may be over-heated .



Mechanical & Electrical Specifications

| Mechanical & Electrical Specifications | |
|--|-------------------------------------|
| Part Number | SRFS-LD-4G-50W-ODm-S-160 |
| Operating Frequency (GHz) | 0-4 |
| Impedance (Ohm) | 50 |
| VSWR | ≤ 1.30 (≤ 1.2 @ DC-3.8G) |
| IM3 (dBc @ 2x43dBm) | -160 |
| Application | Indoor & Outdoor |
| Degree of Protection | IP65 |
| Operating Temperature (°C) | -40 ~ + 80 |
| Interface | Din Male |
| Handling Power (Watt, max) | 50 |
| Dimension (mm)(LxWxH, excl connector) | 180X150X62 |
| Net Weight (g) | 1875 ± 20 |
| Packing Dimensions (mm,LxWxH) | 305 × 170 × 115 |
| Packing Carton Size (mm,LxWxH) | 620 × 360 × 180 |
| ROHS Compliance | Yes |

Plot no 10 Shiv Vihar A Block Najafgarh Nala Road Vikasnagar Uttam Nagar New Delhi-110059

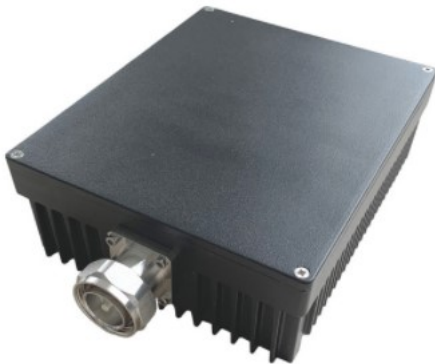
+91-9027232570, +91-8800726650 info@srfsteleinfra.in, info@srfsteleinfra.com

www.srfsteleinfra.in

SRFS TELEINFRA



DIN Male 50 Watt 0-4MHz Low PIM Termination



Plot no 10 Shiv Vihar A Block Najafgarh Nala Road Vikasnagar Uttam Nagar New Delhi-110059

+91-9027232570, +91-8800726650 ✉ info@srfsteleinfra.in, info@srfsteleinfra.com

www.srfsteleinfra.in