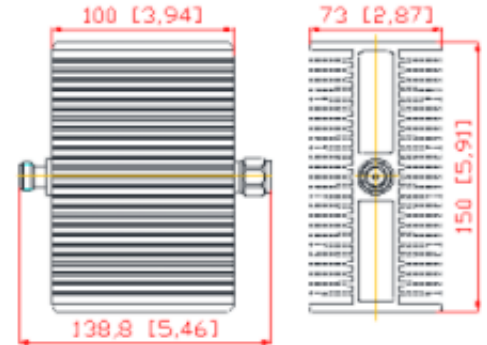


DC-3.8GHz Rf Attenuator

Product Description:

DC-3.8GHz Rf Attenuator

DC-3.8GHz 100 Watts N Male-N Female 3~30dB RF Coaxial Attenuators



| Mechanical & Electrical Specifications | | | | | | | |
|--|-----------------------|------|------|------|----|------|------|
| Part Number | SRFS-AT-3.8G-100W-ONX | | | | | | |
| Operating Frequency (MHz) | DC-3800 | | | | | | |
| Impedance (Ohm) | 50 | | | | | | |
| VSWR | ≤1.25 | | | | | | |
| Application | Indoor & Outdoor | | | | | | |
| Degree of Protection | IP65 | | | | | | |
| Handling Power (Watt, max) | 100 | | | | | | |
| Interface | N Male - N Female | | | | | | |
| Operating Temperature (°C) | -40 ~ + 80 | | | | | | |
| Attenuation(dB) | 3 | 5 | 6 | 10 | 15 | 20 | 30 |
| Attenuation Tolerance(dB) | ±0.5 | ±0.5 | ±0.6 | ±0.8 | ±1 | ±1.5 | ±1.8 |
| Dimension (mm)(L×W×H, excl connector) | 150×100×73 | | | | | | |
| Net Weight (g) | 1150± 20 | | | | | | |
| Packing Dimensions (mm,L×W×H) | 300 × 170 ×120 | | | | | | |
| Packing Carton Size (mm,L×W×H) | 620 × 500 × 190 | | | | | | |
| ROHS Compliance | Yes | | | | | | |

Plot no 10 Shiv Vihar A Block Najafgarh Nala Road Vikasnagar Uttam Nagar New Delhi-110059

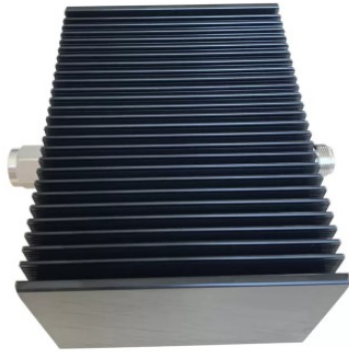
+91-9027232570, +91-8800726650 ✉ info@srfsteleinfra.in, info@srfsteleinfra.com

www.srfsteleinfra.in

SRFS TELEINFRA



DC-3.8GHz Rf Attenuator



Plot no 10 Shiv Vihar A Block Najafgarh Nala Road Vikasnagar Uttam Nagar New Delhi-110059

+91-9027232570, +91-8800726650 ✉ info@srfsteleinfra.in, info@srfsteleinfra.com

🌐 www.srfsteleinfra.in