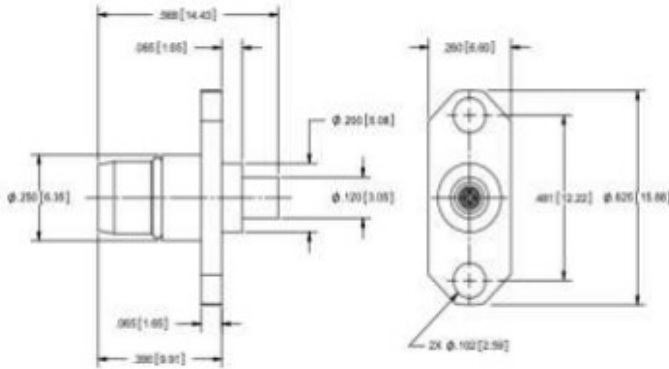


BMA MALE FLANGE MOUNT 2 HOLE FOR .085 CABLE



Electrical & Mechanical Specifications		
Characteristics Impedance	50 Ω	
Frequency	18 GHz	
VSWR	1.02 + .008 f	
Insertion Loss	.03 \sqrt{f}	
Shielding Effectiveness	≥ -90 dB	
Insertion Force	3.0 lbs	
Dielectric Withstanding Voltage	1000 Vrms max. at sea level	
Withdrawal Force	1.5 lbs	
Material & Plating		
	Material	Plating
Body	Stainless Steel	Passivated
Insulator	PTFE	-
Center Conductor	Beryllium Copper	Au
Environmental		
Temperature Range	-65°C~+165°C	
RoHS	Compliant Yes	