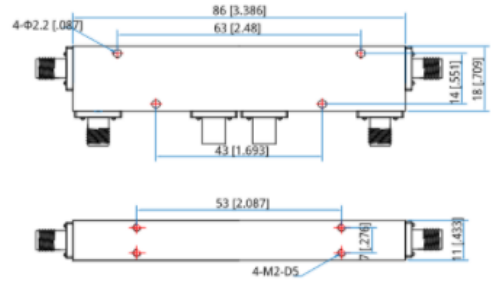


40dB 2000 To 18000MHz High Power Directional Coupler



Product Description:

40dB 2000 To 18000MHz High Power Directional Coupler

2000-18000MHz 40dB 20W 2-18GHz BI-Directional Coupler

BI-Directional couplers are a passive device used mostly in the field of radio technology. An essential feature of BI-directional couplers is with all four coupled ports accessible. In this case the two ports can be terminated with 50 ohm loads, and the outer ports can be connected to potentially mismatched loads without affecting the directivity or output at the other coupled port.

Mechanical & Electrical Specifications	
Part Number	SRFS-BDC-20180-20W-IS40
Operating Frequency (MHz)	2000-18000
Impedance (Ohm)	50
VSWR	≤1.70
Coupling (dB)	40 ± 1
Insertion Loss (dB)	≤2.0
Isolation (dB)	≥47
Application	Indoor
Degree of Protection	IP55
Operating Temperature (°C)	-40 ~ + 80
Interface	SMA Female
Handling Power (Watt, max)	20
Peak Power (Watt, max)	200
Dimension (mm)(L×W×H, excl connector)	86 × 18× 11
ROHS Compliance	Yes

Plot no 10 Shiv Vihar A Block Najafgarh Nala Road Vikasnagar Uttam Nagar New Delhi-110059

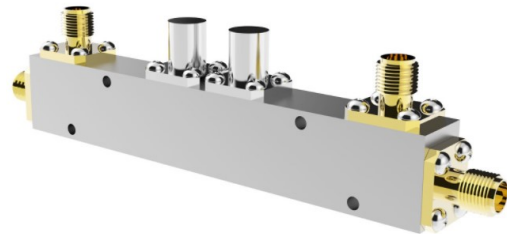
+91-9027232570, +91-8800726650 info@srfsteleinfra.in, info@srfsteleinfra.com

www.srfsteleinfra.in

SRFS TELEINFRA



40dB 2000 To 18000MHz High Power Directional Coupler



Plot no 10 Shiv Vihar A Block Najafgarh Nala Road Vikasnagar Uttam Nagar New Delhi-110059

+91-9027232570, +91-8800726650 ✉ info@srfsteleinfra.in, info@srfsteleinfra.com

🌐 www.srfsteleinfra.in