

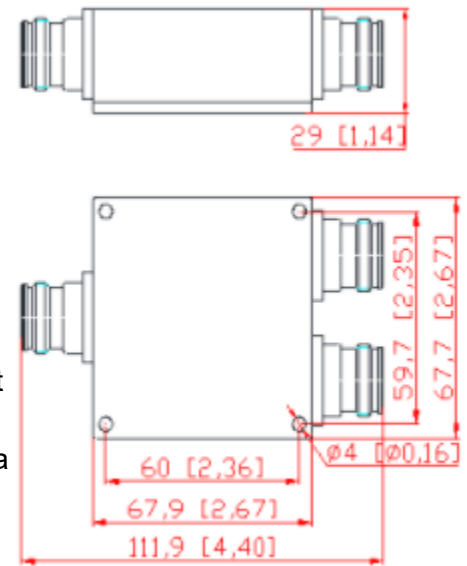
ROHS 4000MHz 200W T Junction Wilkinson Power Divider

Product Description:

ROHS 4000MHz 200W T Junction Wilkinson Power Divider

550-4000MHz 698-4000MHz 4.3-10 Mini Female Low PIM -153dBc - 160dBc 2 Way Wilkinson Power Divider For Commercial DAS IBS

Wilkinson Power Divider (WPD) is a specific class of power divider circuit that can achieve isolation between the output ports while maintaining a matched condition on all ports. The Wilkinson design can also be used as a power combiner, the high degree of isolation between the output ports prevents cross talk between the individual channels which can be easily fabricated as quarter wave lines on circuit. WPD also can be unequally divided the input power based on different usage.



Mechanical & Electrical Specifications

Mechanical & Electrical Specifications	
Part Number	SRFS-PD-05540-OP2
Operating Frequency (MHz)	550-4000
Impedance (Ohm)	50
VSWR	≤ 1.25
Split Loss (dB)	≤ 3.7
Isolation (dB)	≥ 18
IM3 (dBc @ 2x43dBm)	-153/-160
Application	Indoor & Outdoor
Degree of Protection	IP65
Operating Temperature (°C)	-25~ + 85
Interface	4.3-10 Female
Average Power (Watt, max)	50(Power dividers) / 2(combiner)
Peak Power (Watt, max)	200
Dimension (mm)(LxWxH, excl connector)	67.9x 67.7x 29
Net Weight (g)	450 \pm 20
Packing Dimensions (mm,LxWxH)	190 x 80 x 45
Packing Carton Size (mm,LxWxH)	430 x 400 x 105
ROHS Compliance	Yes

Plot no 10 Shiv Vihar A Block Najafgarh Nala Road Vikasnagar Uttam Nagar New Delhi-110059

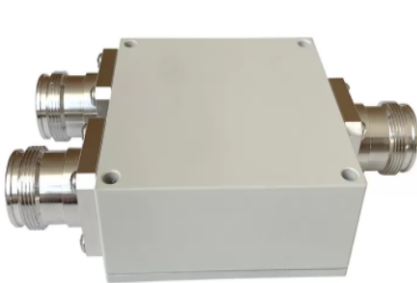
+91-9027232570, +91-8800726650 ✉ info@srfsteleinfra.in, info@srfsteleinfra.com

www.srfsteleinfra.in

SRFS TELEINFRA



ROHS 4000MHz 200W T Junction Wilkinson Power Divider



Plot no 10 Shiv Vihar A Block Najafgarh Nala Road Vikasnagar Uttam Nagar New Delhi-110059

+91-9027232570, +91-8800726650 ✉ info@srfsteleinfra.in, info@srfsteleinfra.com

🌐 www.srfsteleinfra.in