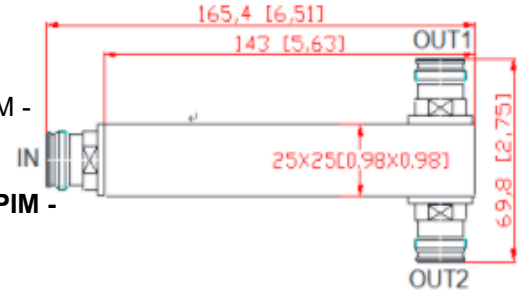


698-6000MHz N Female Mini DIN 4.3-10 Female Mini Design Low PIM -165dbc 2 Way Reactive Power Splitter

Product Description:

698-6000MHz N Female Mini DIN 4.3-10 Female Mini Design Low PIM -165dbc 2 Way Reactive Power Splitter For DAS IBS

698-6000MHz N Female Mini DIN 4.3-10 Female Mini Design Low PIM -165dbc 2 Way Reactive Power Splitter For DAS IBS



Reactive power splitters have been used to be signal divider-component for antenna distribution system (DAS) and signal cable systems for in-building /out building signal coverage because of their low loss and rugged nature., reactive splitters are quarter wave length lines matched to split signals evenly to the output paths. This characteristic allows for efficient, high power, broadband operation with minimal solder joints and better 3rd PIM

Mechanical & Electrical Specifications

Part Number	SRFS-PS-0760-OP2-S
Operating Frequency (MHz)	698-6000
Impedance (Ohm)	50
VSWR	≤1.25
Split Loss (dB)	≤3.5
IM3 (dBc @ 2×43dBm)	-155 / -165
Application	Indoor & Outdoor
Degree of Protection	IP65
Operating Temperature (°C)	-40 ~ + 80
Interface	4.3-10 Female
Handling Power (Watt, max)	500
Peak Power (Watt, max)	1500
Dimension (mm)(L×W×H, excl connector)	143 × 25 × 25
Net Weight (g)	185 ± 20
Packing Dimensions (mm,L×W×H)	190 × 80 × 45
Packing Carton Size (mm,L×W×H)	430 × 400 × 240
ROHS Compliance	Yes
Color	Customized
Connector	Mini DIN 4.3-10 Female

Plot no 10 Shiv Vihar A Block Najafgarh Nala Road Vikasnagar Uttam Nagar New Delhi-110059

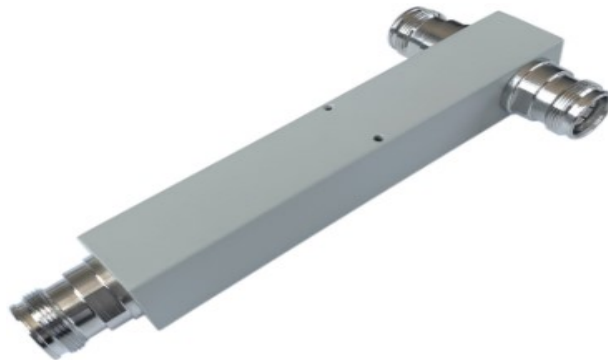
+91-9027232570, +91-8800726650 info@srfsteleinfra.in, info@srfsteleinfra.com

www.srfsteleinfra.in

SRFS TELEINFRA



698-6000MHz N Female Mini DIN 4.3-10 Female Mini
Design Low PIM -165dbc 2 Way Reactive Power
Splitter



Plot no 10 Shiv Vihar A Block Najafgarh Nala Road Vikasnagar Uttam Nagar New Delhi-110059

+91-9027232570, +91-8800726650 info@srfsteleinfra.in, info@srfsteleinfra.com

www.srfsteleinfra.in