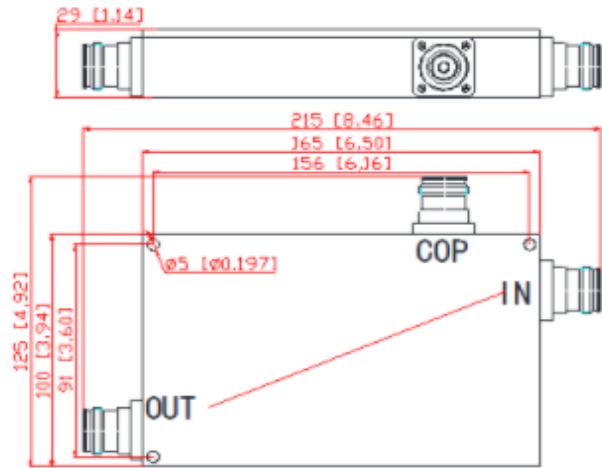


138 To 960MHz RF Directional Coupler

Product Description:

138 To 960MHz RF Directional Coupler

138-960MHz 4.3-10 Mini DIN Female Air Dielectric Directional Coupler Public Safety DAS IBS



Mechanical & Electrical Specifications

Part Number	SRFS-DC-138960-OPx					
Operating Frequency (MHz)	138-960					
Impedance (Ohm)	50					
VSWR	≤1.25					
Coupling (dB)	6 ± 1.5	10 ± 1.7	15 ± 1.7	20 ± 1.7	25 ± 2.0	30 ± 2.0
Insertion Loss (dB)	≤1.80	≤1.20	≤0.5	≤0.4	≤0.4	≤0.3
Isolation (dB)	≥24	≥28	≥33	≥38	≥43	≥45
IM3 (dBc @ 2x43dBm)	-153					
Application	Indoor & Outdoor					
Degree of Protection	IP65					
Operating humidity	≤95%					
Operating Temperature (°C)	-40 ~ + 80					
Interface	4.3-10 Female					
Handling Power (Watt, max)	500					
Peak Power (Watt, max)	1500					
Dimension (mm)(LxWxH, excl connector)	165 × 100 × 29					
Packing Carton Size(mm)	470 × 280 × 115					
ROHS Compliance	Yes					
Net Weight (g)	1240 ± 20					
Color	Customized					
Connector	N Female					

Plot no 10 Shiv Vihar A Block Najafgarh Nala Road Vikasnagar Uttam Nagar New Delhi-110059

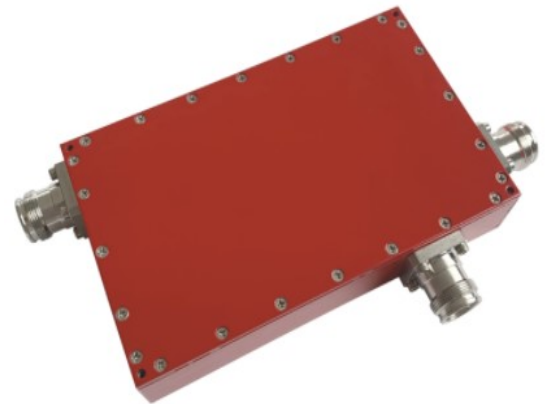
+91-9027232570, +91-8800726650 info@srfsteleinfra.in, info@srfsteleinfra.com

www.srfsteleinfra.in

SRFS TELEINFRA



138-960MHz Rf Directional Coupler



Plot no 10 Shiv Vihar A Block Najafgarh Nala Road Vikasnagar Uttam Nagar New Delhi-110059

+91-9027232570, +91-8800726650 info@srfsteleinfra.in, info@srfsteleinfra.com

www.srfsteleinfra.in